

# GREENING TOURISM IN MALAYSIA'S ENVIRONMENTAL SENSITIVE SITE: CASE SUDY ON TASIK CHINI

HIGHER EDUCTION IN REGIONS AND CITIES  
FOR STRONGER, CLEANER AND FAIRER  
REGIONS

BUILDING STRONGER REGIONS  
THROUGH CLUSTER-BASED DEVELOPMENT

*MUSHRIFAH IDRIS*  
TASIK CHINI RESEARCH CENTER  
UNIVERSITI KEBANGSAAN MALAYSIA



PUSAT PENYELIDIKAN TASIK CHINI  
Tasik Chini Research Center

OECD CONFERENCE  
10-11 FEBRUARY 2011  
SERVILLE, SPAIN

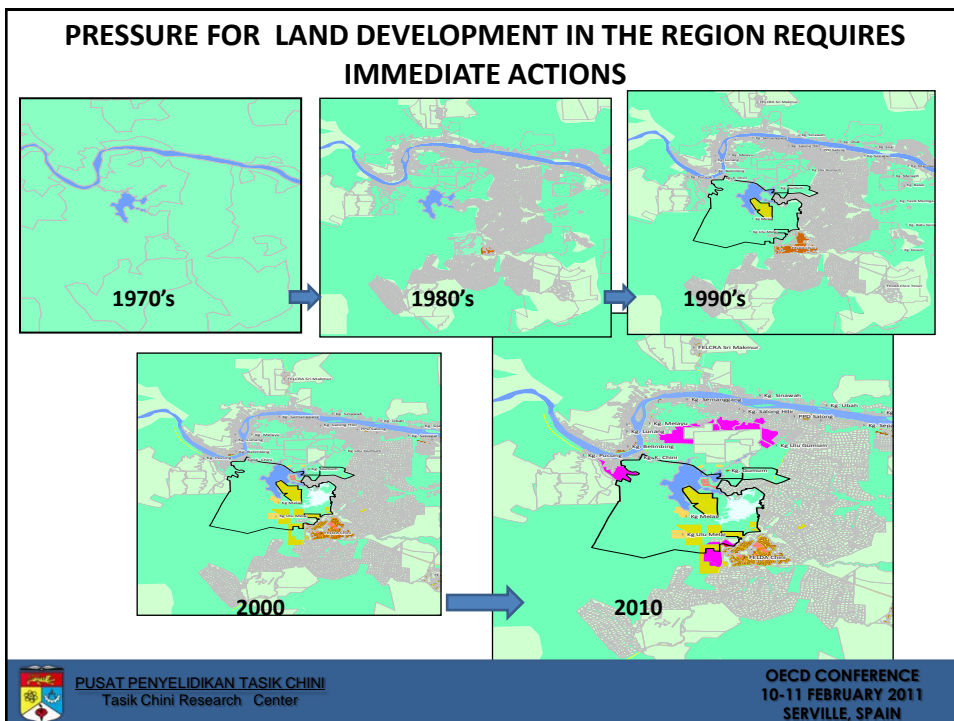
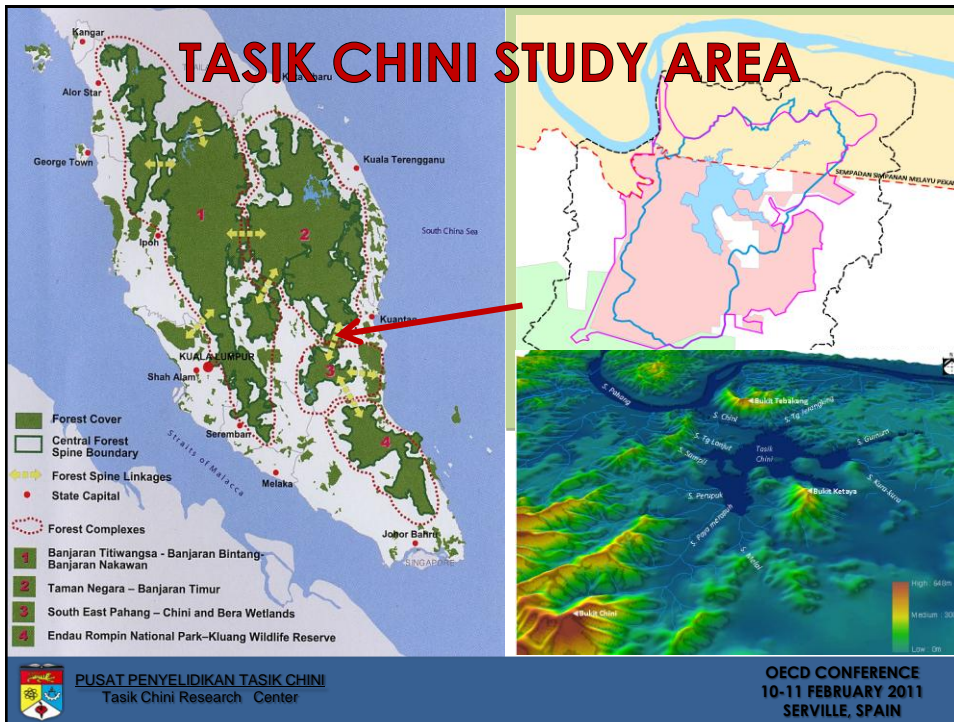
## PRESENTATION OUTLINE

1. Tasik Chini study area.
2. Success stories.
3. Green activities to enhance eco-tourism
4. Future proposed activities



PUSAT PENYELIDIKAN TASIK CHINI  
Tasik Chini Research Center

OECD CONFERENCE  
10-11 FEBRUARY 2011  
SERVILLE, SPAIN



## SUCCESS STORIES

1. Active research by UKM towards the protection and conservation of Tasik Chini.
2. Proposed the watershed as a UNESCO Biosphere Reserve.
  - To conserve the ecosystem.
  - An interactive learning area.
  - To sustain tourism as eco-tourism.
3. Political will from federal and State Government.
  - GLC spearhead rehabilitation programmes and new Strategic Implementation Plans.



PUSAT PENYELIDIKAN TASIK CHINI  
Tasik Chini Research Center

OECD CONFERENCE  
10-11 FEBRUARY 2011  
SERVILLE, SPAIN

## ACTIVE RESEARCH BY UKM SCIENTIST IN TASIK CHINI

1. A need to monitoring the water level in the lake.
  - as a result of the construction of the barrage.
  - the water quality.
2. Hydrology of the watershed
  - landuse management



PUSAT PENYELIDIKAN TASIK CHINI  
Tasik Chini Research Center

OECD CONFERENCE  
10-11 FEBRUARY 2011  
SERVILLE, SPAIN



## TASIK CHINI AS A BIOSPHERE RESERVE

1. Encourage conservation among locals and visitors through active awareness programmes.
2. The involvement of communities and local authorities in integrated eco-tourism programmes and businesses.



PUSAT PENYELIDIKAN TASIK CHINI  
Tasik Chini Research Center

OECD CONFERENCE  
10-11 FEBRUARY 2011  
SERVILLE, SPAIN



**Awareness on conservation among the local communities and visitors.**



PUSAT PENYELIDIKAN TASIK CHINI  
Tasik Chini Research Center

OECD CONFERENCE  
10-11 FEBRUARY 2011  
SERVILLE, SPAIN

## PROPOSED NEW STRATEGIC IMPLEMENTATION PLANS.

- **Boundary demarcation**
- **Legal framework for protection**
- **Institutional & Management framework**
- **Tourism Development**
- **Rehabilitation & conservation**
- **Stakeholder participation**



PUSAT PENYELIDIKAN TASIK CHINI  
Tasik Chini Research Center

OECD CONFERENCE  
10-11 FEBRUARY 2011  
SERVILLE, SPAIN

## THE REHABILITATION PROGRAMME

- reforestation that protect the various head streams,
- provides roaming area,
- controls soil erosion
- remediates contaminated land
- bring back biodiversity



PUSAT PENYELIDIKAN TASIK CHINI  
Tasik Chini Research Center

OECD CONFERENCE  
10-11 FEBRUARY 2011  
SERVILLE, SPAIN

**Gracias**

TAMAN BIOSFERE  
**Tasik Chini**  
BIOSPHERE RESERVE



 **PUSAT PENYELIDIKAN TASIK CHINI**  
Tasik Chini Research Center

**OECD CONFERENCE**  
10-11 FEBRUARY 2011  
SERVILLE, SPAIN