



ECDI2030
Early Childhood Development Index

Measuring up for young children

Claudia Cappa, Data & Analytics,
UNICEF

WHAT IS THE ECDI2030?





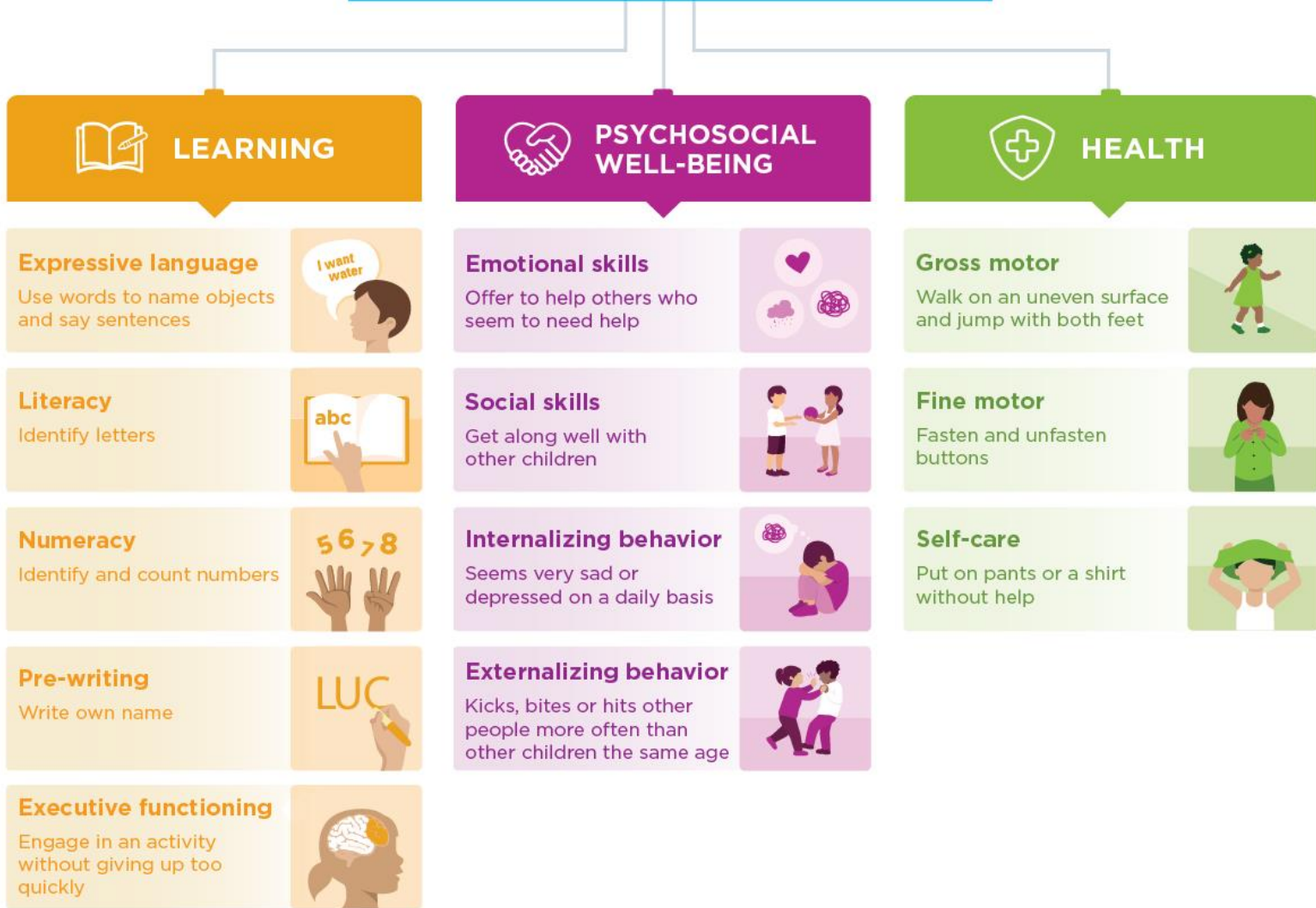
ECDI2030

Early Childhood Development Index

GENERAL CHARACTERISTICS AND USE

- Is a **population-level** data collection instrument that can be integrated into **existing national data collection and monitoring efforts**
- Captures the achievement of key developmental **milestones** by children aged **24 to 59 months**
- Generate internationally **comparable** data to **track progress** towards SDG 4.2.1, **measure disparities** and **inform policies**

Early Childhood Development



20 QUESTIONS

CORE IMPLEMENTATION ASPECTS

SURVEY DESIGN

- National representative samples
- In countries with very low fertility rates, oversample of household with children younger than 5 years old might be recommended

QUESTIONNAIRE DESIGN

- Questionnaire that collects information on children aged 24 to 59 months, administered to the child's mother/primary caregiver
- 3 minutes to complete

TRAINING

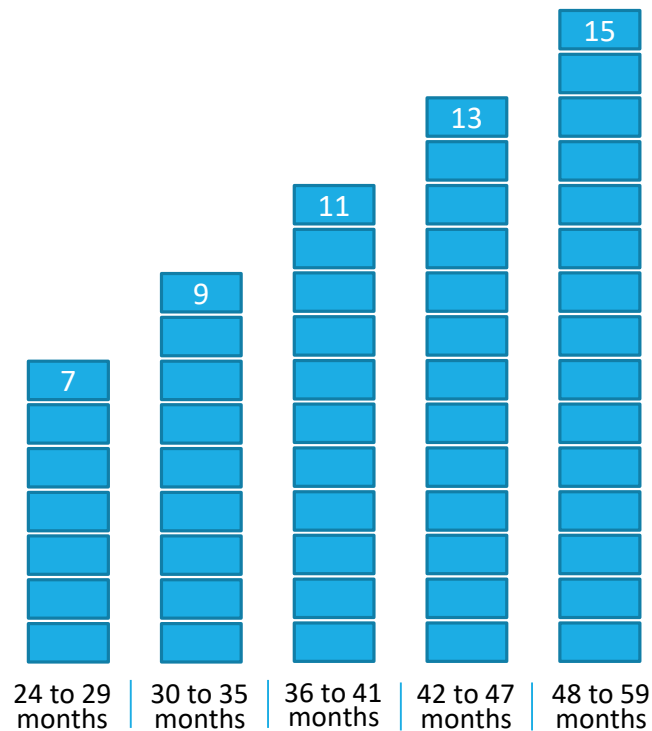
- Around 3 hours for review, practice and mock interviews
- Generic interviewers
- Separate training for paper questionnaires and CAPI application

ECDI2030 INDICATOR



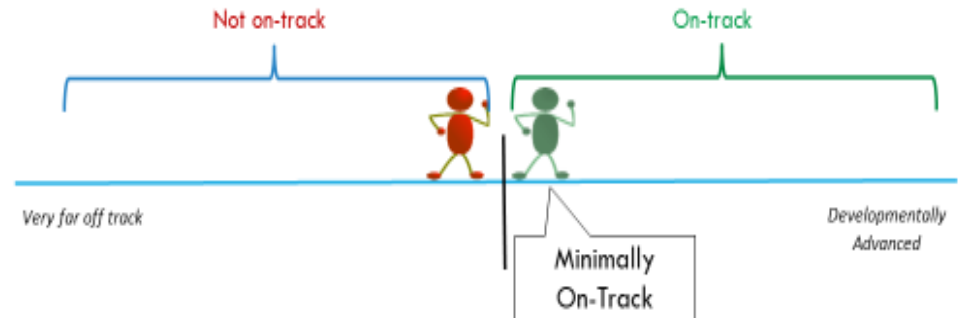
Questions ECD1 to ECD20 are used to generate one indicator

Percentage of children age 24-59 months who are developmentally on track, i.e. have achieved the minimum number of milestones expected for their age group



MINIMUM NUMBER OF MILESTONES EXPECTED BY AGE GROUP

MINIMALLY ON-TRACK CHILD



Can be disaggregated by a child's sex, area of residence, household wealth and other key variables, to **reveal disparities** in developmental outcomes among children with different socioeconomic and family backgrounds

**HOW WAS IT
DEVELOPED?**



REVIEW OF EXISTING INSTRUMENTS (500+ items)

Expert rating and testing

DRAFT SET OF QUESTIONS (61 items)

Evaluating items in terms of comprehension, interpretation and cultural adequacy through cognitive testing in Bulgaria, Mexico, Uganda and the United States

REVISED DRAFT SET OF QUESTIONS (58 items)

Testing the administration of items in population-based surveys in Belize, Mexico and the State of Palestine

Harmonizing a global dataset with data from the ECDI field tests and an additional 33 countries

REVISED DRAFT SET OF QUESTIONS (36 items)

Identifying the best items using discrimination and difficulty properties

Undertaking further analyses to identify the minimum set of items fulfilling content and age coverage criteria

FINAL SET OF QUESTIONS (20 items)

Defining cut-scores through a standard setting exercise

CONSTRUCTION OF THE INDEX

Translating the module into the 8 languages

Developing manuals, training material, syntaxes for data analysis, tabulation plans and templates for reporting

CONTRIBUTORS

Inter-Agency and Expert Group on ECD Measurement

- Instituto Nacional de Salud Pública, Mexico
- Inter-American Development Bank
- Organisation for Economic Co-operation and Development
- Palestinian Central Bureau of Statistics
- Save the Children
- Statistics Canada
- UNESCO-UIS
- UNICEF (Chair)
- World Bank
- World Health Organization

Members of the Technical Advisory Group

- Santiago Cueto, Group for the Analysis of Development (GRADE), Peru
- Edward Frongillo, University of South Carolina, USA
- Melissa Gladstone, University of Liverpool, UK
- Peter Halpin, University of North Carolina, USA
- Hollie Hix-Small, Portland State University, USA
- Magdalena Janus, McMaster University, Canada
- Gillian Lancaster, Keele University, UK
- Dana Charles McCoy, Harvard University, USA
- Abigail Raikes, University of Nebraska Medical Center, USA
- Nirmala Rao, University of Hong Kong, China, Hong Kong Special Administrative Region
- Ghassan Shakhshir, An Najah University, State of Palestine

Members of the Global Standards Setting Panel

- Claudia Regina Lindgren Alves, Univ Federal de Minas Gerais, Brazil
- Yvonne Becher, The Child Development Centre, China, Hong Kong Special Administrative Region
- Maureen Black, University of Maryland School of Medicine, USA
- Jennifer Grisham-Brown, University of Kentucky, USA
- Gauri Divan, Sangath, India
- Kirsten Donald, University of Cape Town, South Africa
- Melissa Gladstone, Un. of Liverpool, UK
- Frances Page Glascoe, Vanderbilt University, USA
- Meta van den Heuvel, Hospital for Sick Children, Netherlands
- Gwendoline Kandawasvika, University of Zimbabwe, Zimbabwe
- Shazia Maqbool, The Children's Hospital and Institute of Child Health, Pakistan
- Fahmida Tofail, International Centre for Diarrhoeal Disease Research, Bangladesh
- Erika Marcela Osorio Valencia, National Institute of Perinatology, Mexico
- Tao Xin, Beijing Normal University, China
- Pia Zeinoun, American University of Beirut, Lebanon



**WHAT IS AVAILABLE TO
PROMOTE ITS USE**



ECDI2030

مؤشر تنمية الطفولة المبكرة 2030



ECDI2030

儿童早期发展指数



ECDI2030

Índice de Desenvolvimento na Primeira Infância



ECDI2030

Indice de développement de la petite enfance



ECDI2030

Índice de desarrollo en la primera infancia



ECDI2030

Индекс развития детей в раннем возрасте



ECDI2030

Early Childhood Development Index



ECDI2030

Early Childhood Development Index

Measuring up for young children

IMPLEMENTATION PACKAGE

Tools for survey planning:

- Quick implementation guide
- Guidelines on integration in household surveys
- Frequently asked questions
- Slide decks on the rationale, development and implementation aspects of the ECDI2030

Tools for survey preparation:

- Standard questionnaires in 8 languages
- Administration instructions manual
- Training slide deck and materials
- Data quality guidance

Tools for data analyses and report:

- Syntaxes for data processing and analyses
- Tabulation plan
- Data analyses slide deck
- Report template

Other tools:

- Guidelines on further analysis and dissemination



Early childhood development overview



Early Childhood Development Index 2030 (ECDI2030)



Brochures
Country profiles

Countdown to 2030: Country Profiles on Early Childhood Development



Brochures

The Formative Years: UNICEF's work on measuring ECD

<https://data.unicef.org/>

[topic/early-childhood-development/overview/](https://data.unicef.org/topic/early-childhood-development/overview/)

A large, blurred image of a child's face occupies the left side of the page. The child's eyes are closed, and their expression is peaceful. The lighting is soft and warm, creating a sense of intimacy and care. The background is dark, making the child's face the central focus.

THANK YOU.

Website: data.unicef.org/resources/early-childhood-development-index-2030-ecdi2030/

ccappa@unicef.org

United Nations Children's Fund (UNICEF) Division of Data, Analytics, Planning and Monitoring, 2020