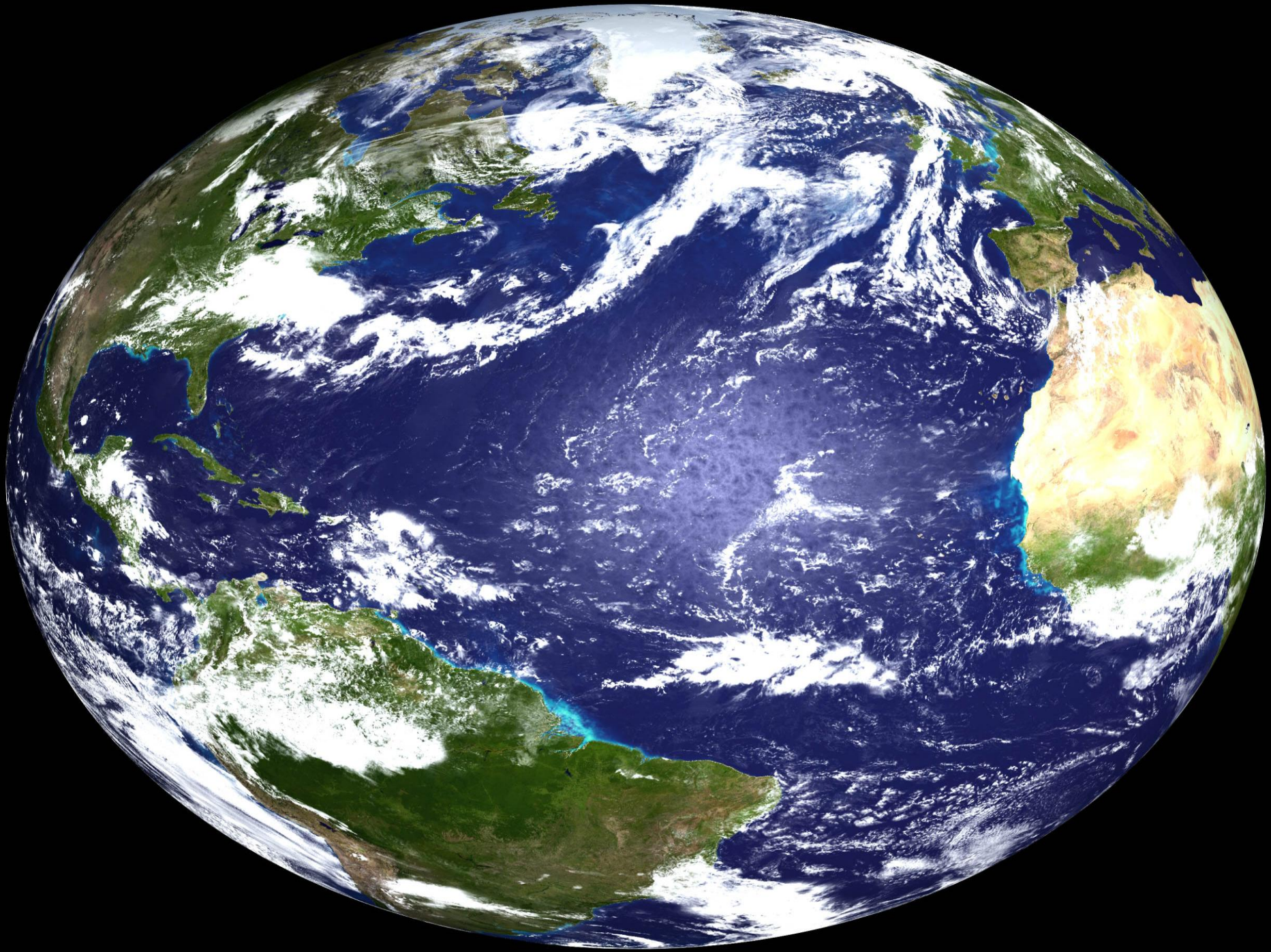
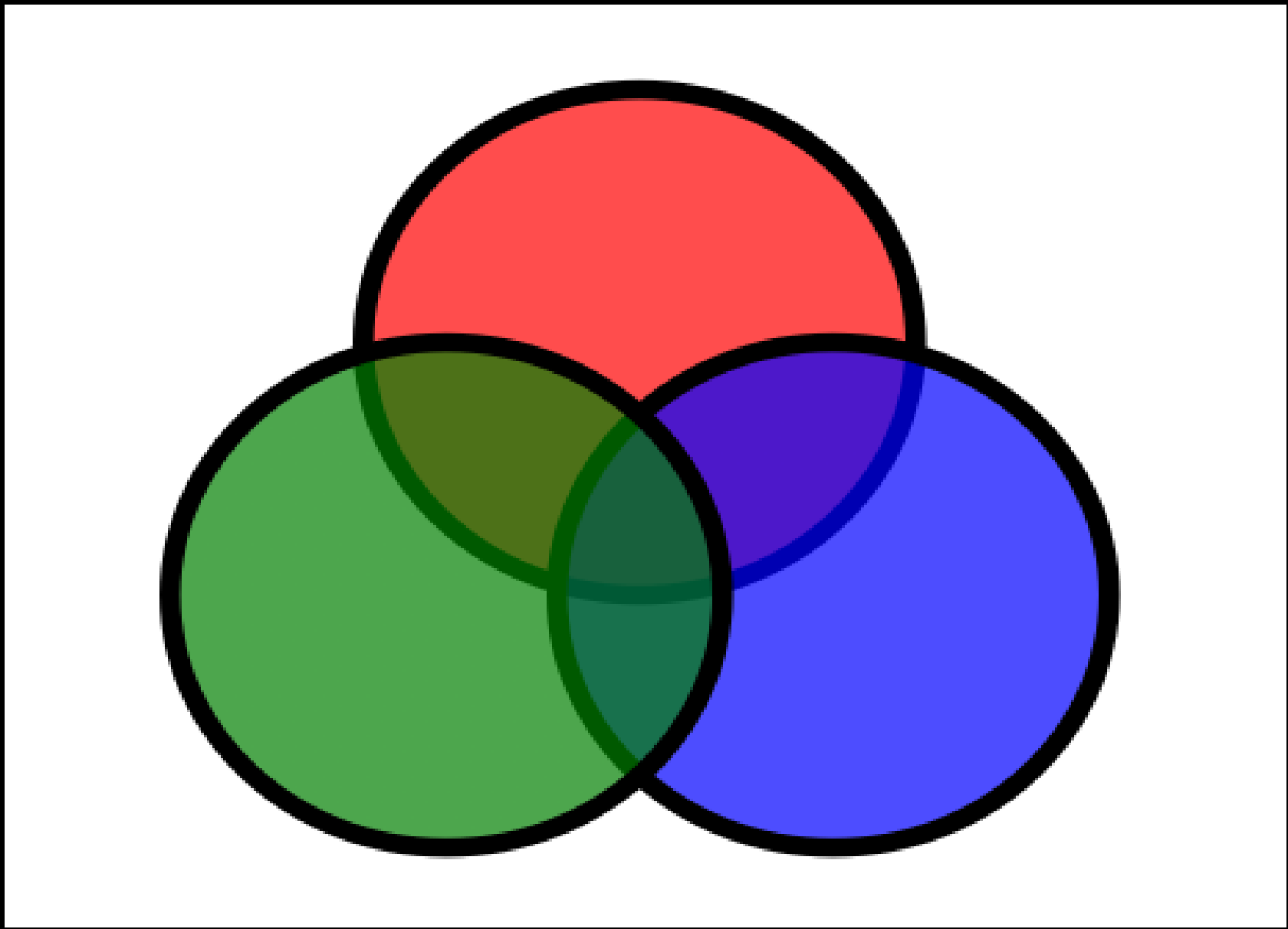


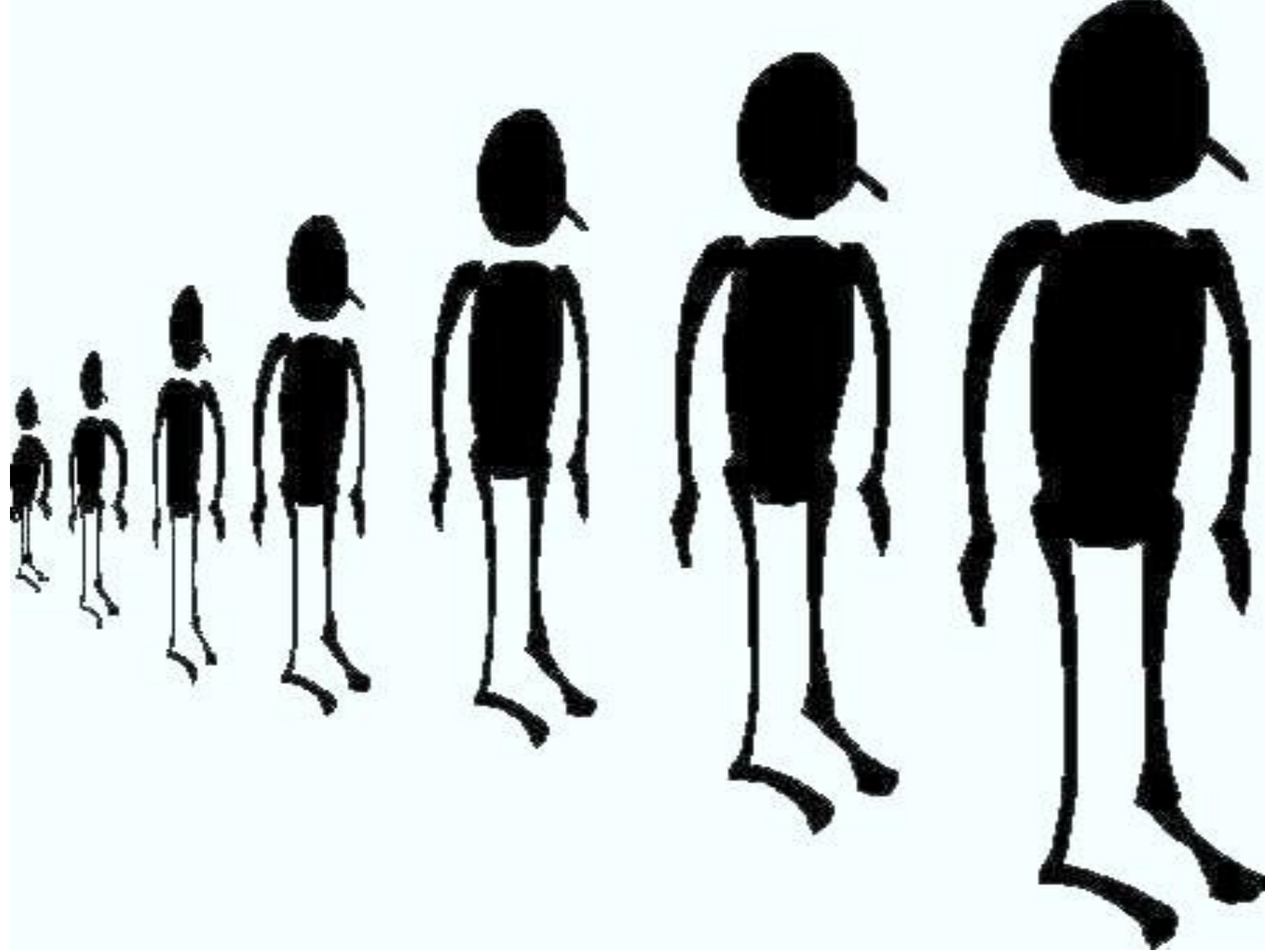
Promoting Sustainable Investment, Production & Innovation

Martin Charter

The Centre for Sustainable Design
University for the Creative Arts







A wooden signpost stands in a garden, featuring two directional signs. The sign on the left points left and is labeled 'Path of Life'. The sign on the right points right and is labeled 'EASY PATH'. The signpost is set against a backdrop of lush greenery, including a stone lantern and various plants. The ground is covered with moss and fallen leaves.

Path of Life

**EASY
PATH**









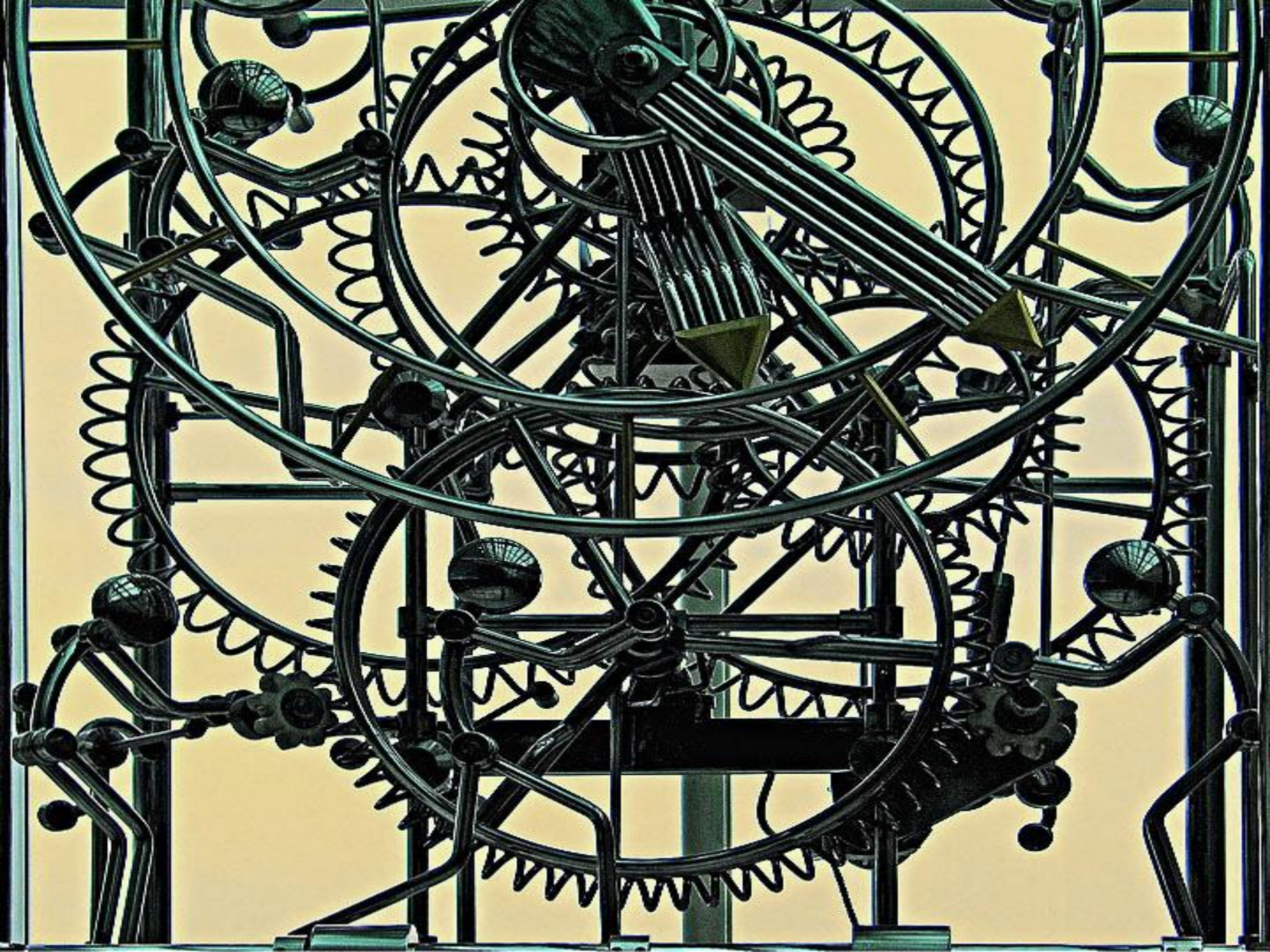








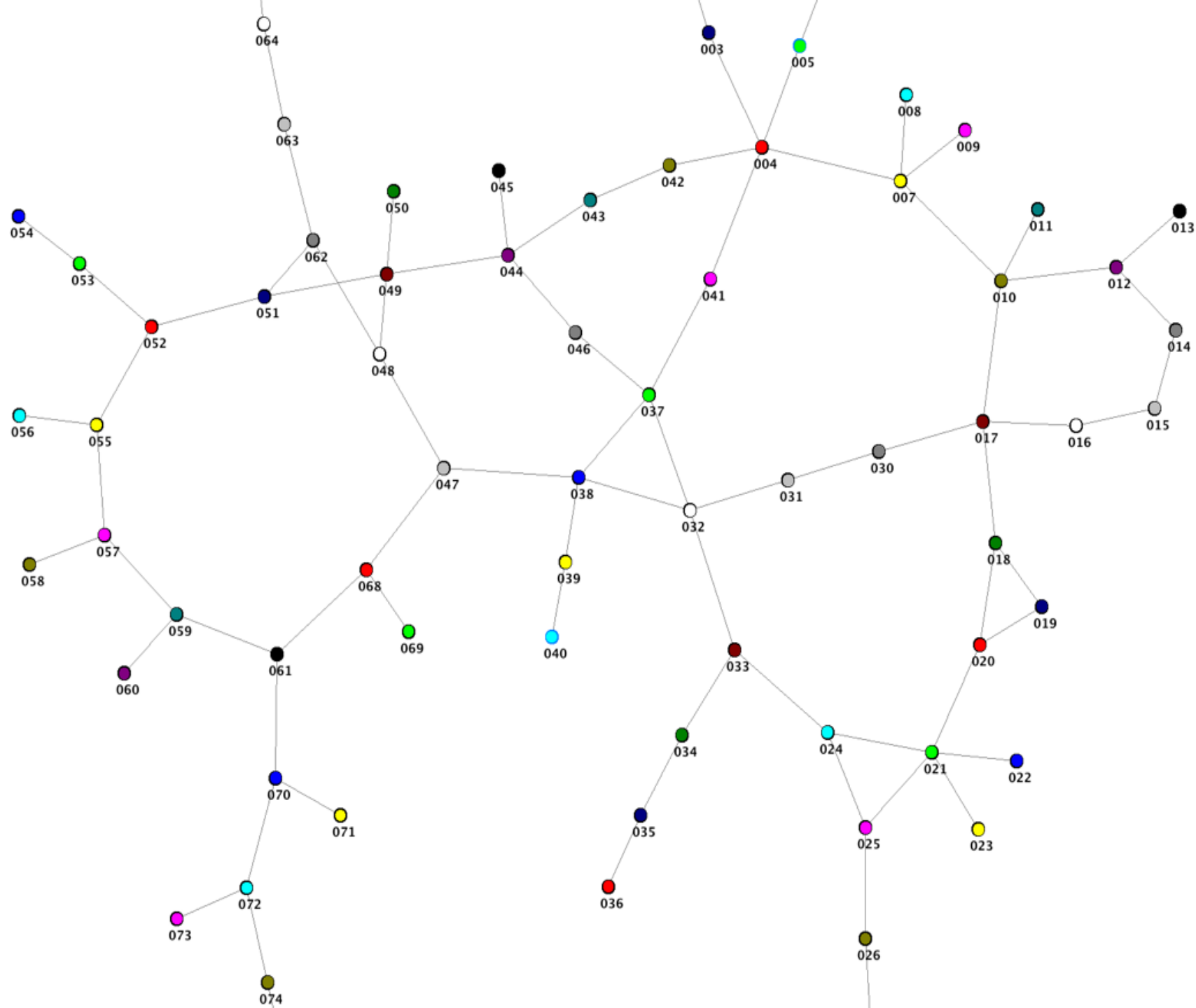
Help Me!















(*Some restrictions apply)

需要帮忙吗?
请使用宜家购物工具

儿童乐园

宜家·购物工具

宜家·购物工具

宜家·购物工具



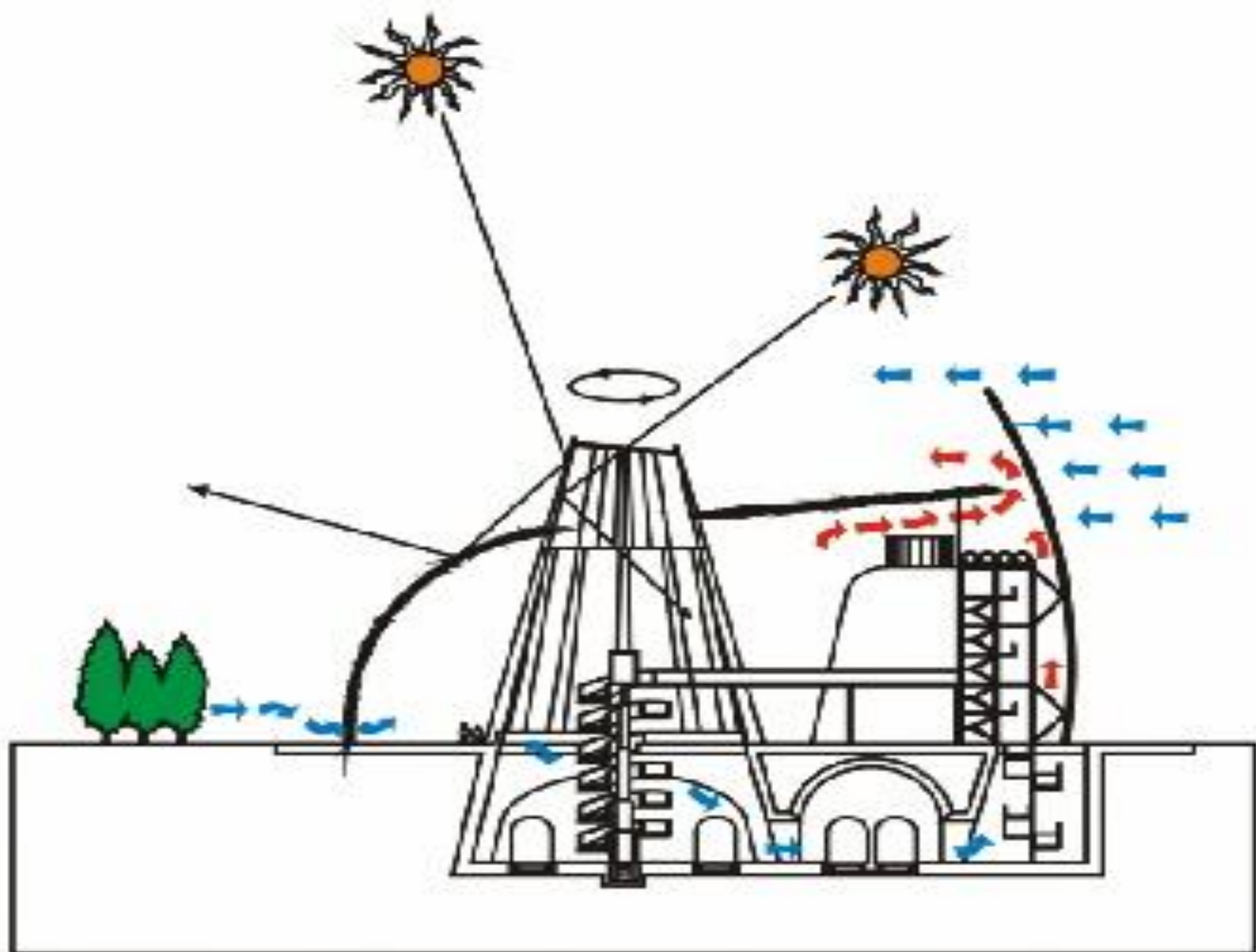














8.8

CHECK FILTER

RESET

TIMER

HIGH AUTO

MED LOW

ENERGY SAVE

COOL FAN

ON/OFF



FEDDERS

BUILT-IN 3 MINUTE COOLING DELAY













AF 31095152 A



THIS NOTE IS LEGAL TENDER
FOR ALL DEBTS. PUBLIC AND PRIVATE

SERIES
1996



















A large, bright orange and yellow explosion or fireball against a dark background. The fire is intense and fills most of the frame, with a dark, starry space background visible around the edges.

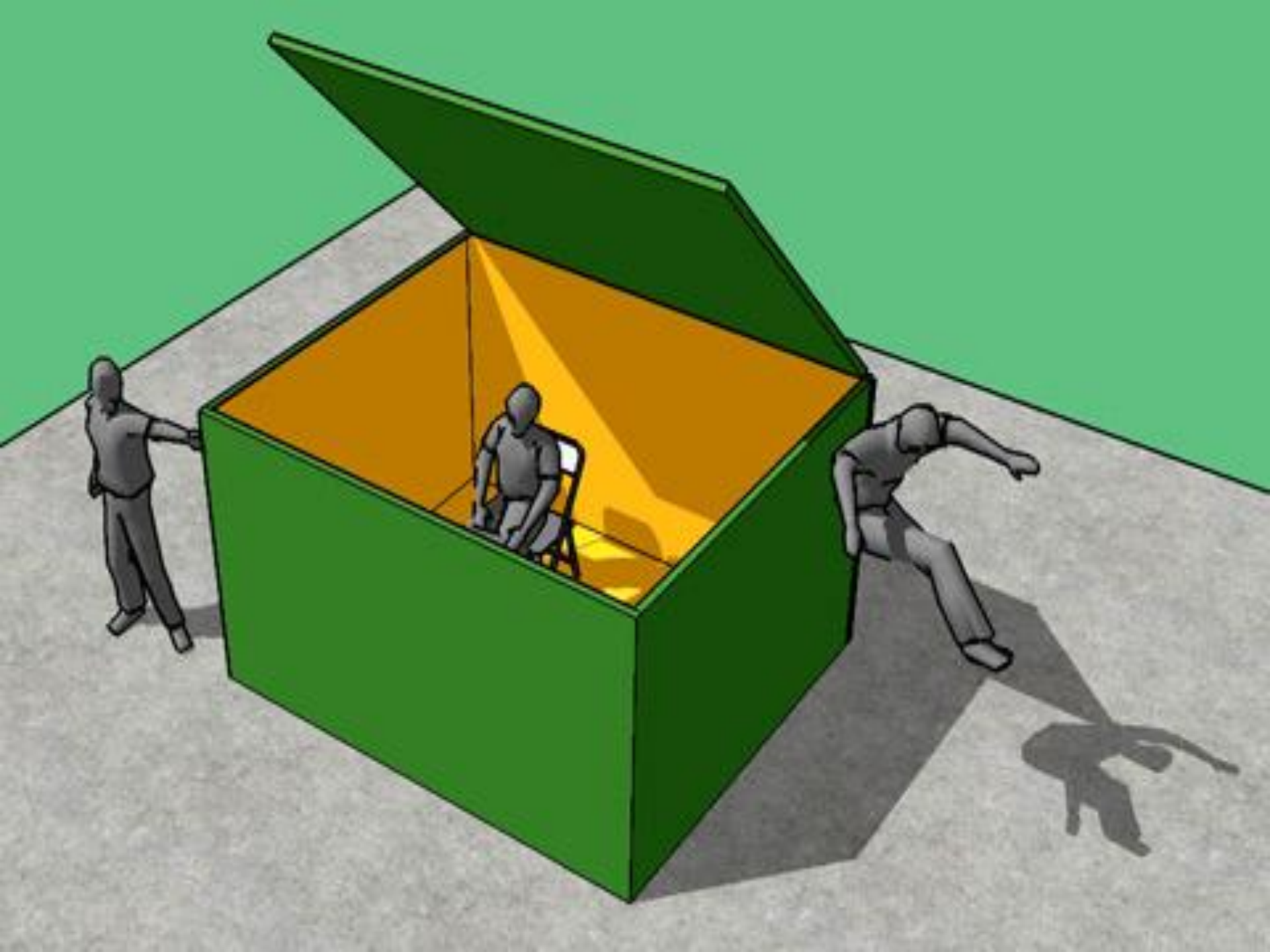
BACKLASH



FACTOR 10

I need a radical change







LEADER





















ANY BODY



























Contact Details

Martin Charter
Director

The Centre for Sustainable Design
University for the Creative Arts

Tel: 00 44 (0)1252 892772

Fax: 00 44 (0)1252 892747

email: mcharter@ucreative.ac.uk

web: www.cfsd.org.uk