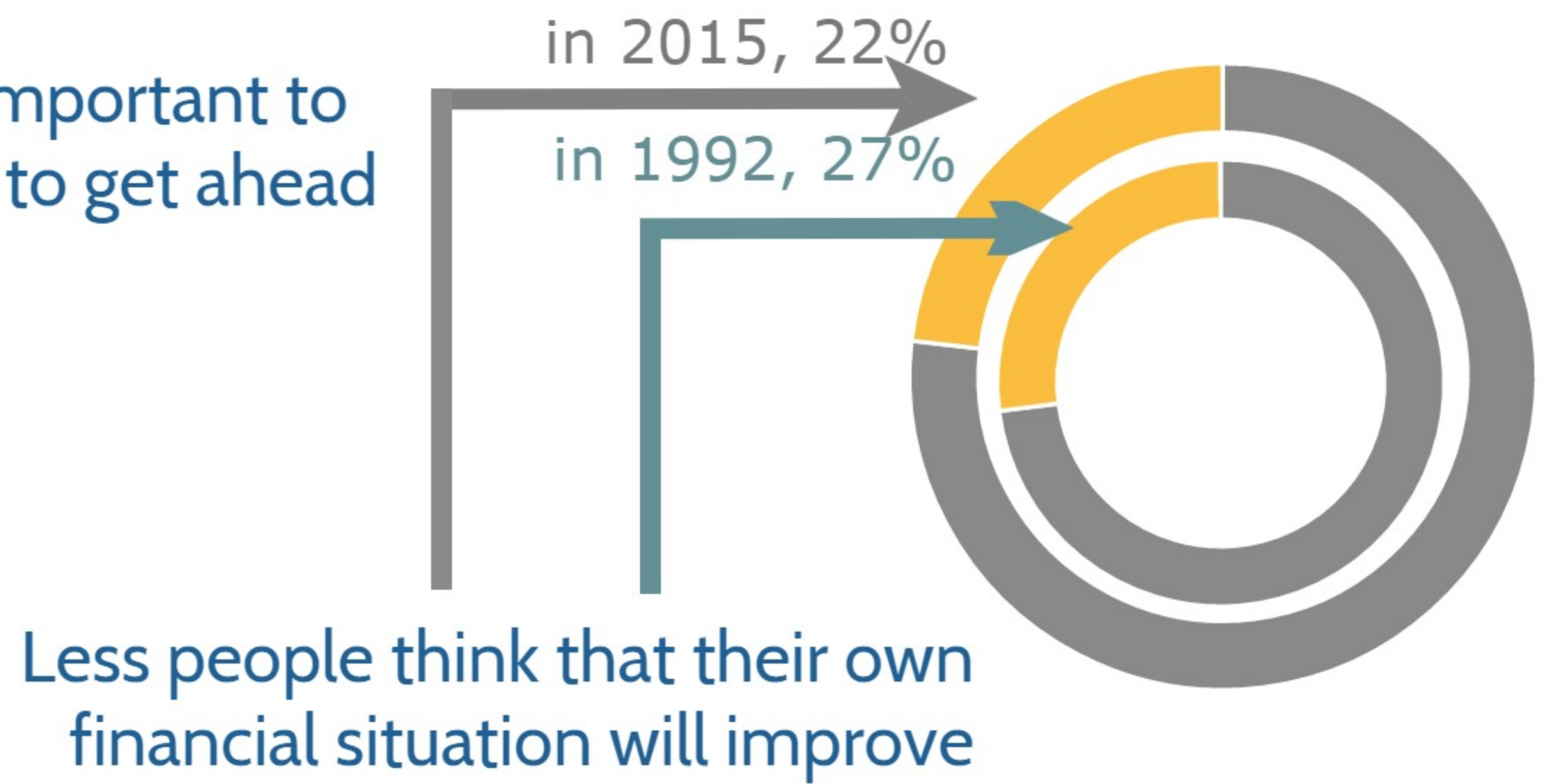
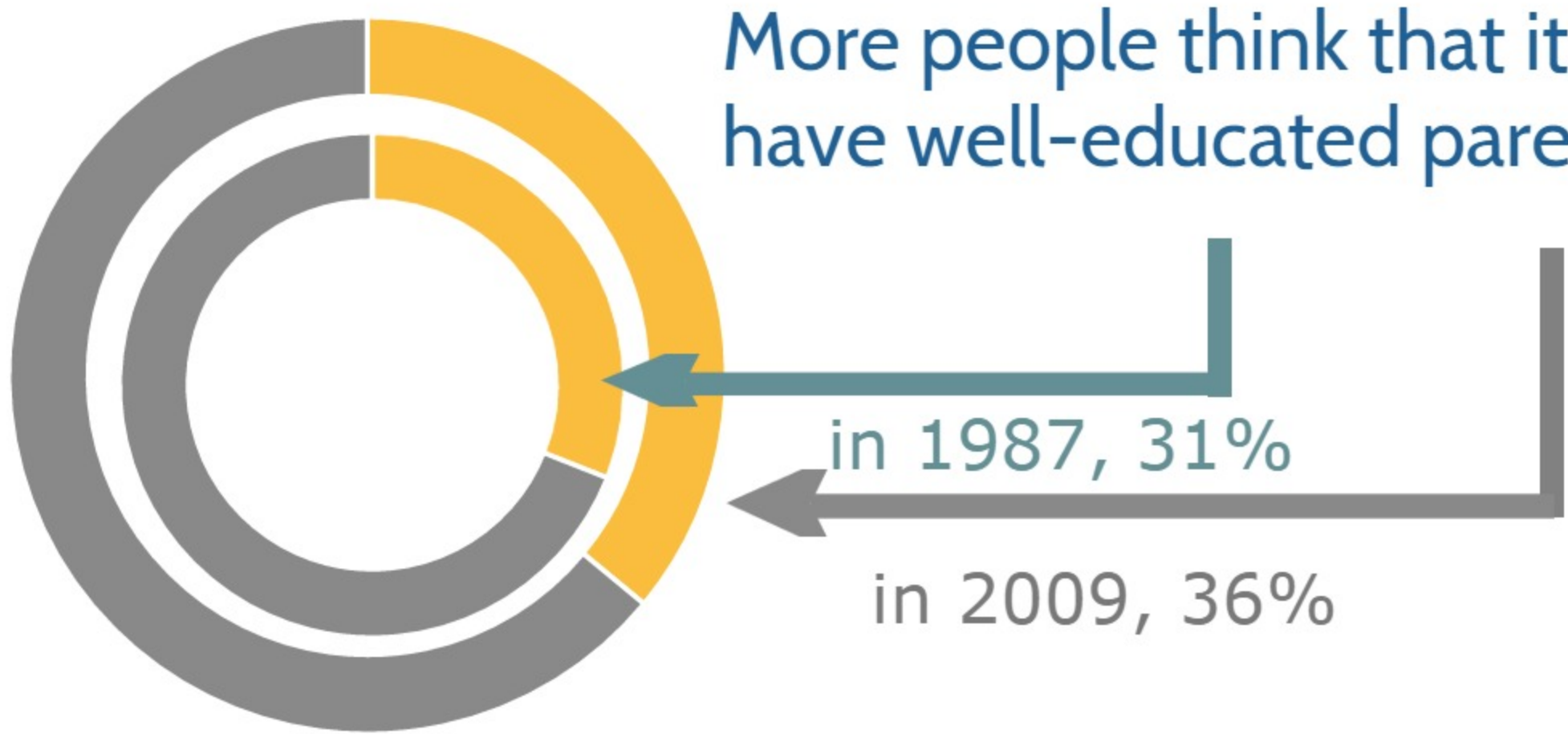


A Broken Social Elevator?

How to Promote Social Mobility



Sticky floors at the bottom



1 child of manual worker out of 4 becomes a manager



4 children with low-educated parents out of 10 end up with low education

Sticky ceilings at the top



1 child of manager out of 2 becomes a manager



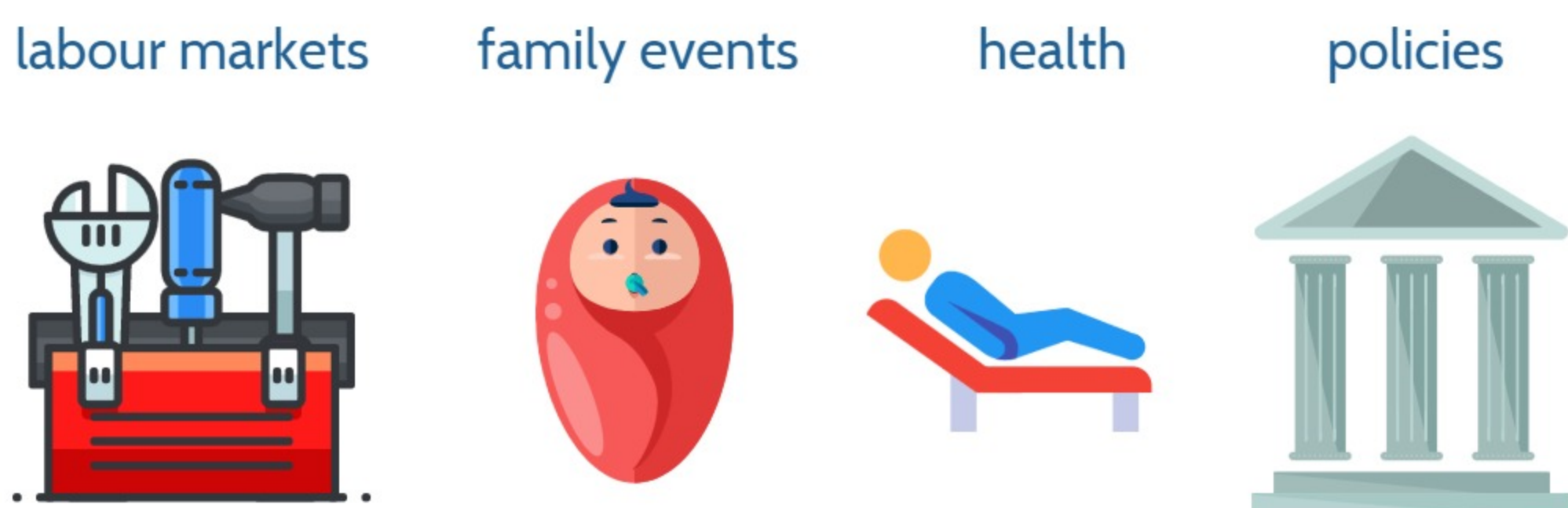
1 child with high-educated parents out of 10 ends up with low education

The poorest and the richest are most likely to remain that way



Over a four-year period, almost 60% of people remain stuck at the bottom 20%. 70% of the 20% richest remain stuck at the top.

Income changes are shaped by



What policy makers can do

