

# **Experiences in the Cooperation between Mekong countries , 26 April 2010.**

By Hoang Viet Khang, Deputy Director  
General



# Scope

- Overview of the GMS Program
- Viet Nam in the GMS



# The Greater Mekong Subregion (GMS)

## Myanmar

Land area: 677 thou sq km  
 Population: 54.8 M  
 GDP per capita: US\$255

## Thailand

Land area: 513 thou sq km  
 Population: 65.3 M  
 GDP per capita: US\$2,727

## The GMS in 2005

Land area: 2.6 M sq km  
 Population: 316 M  
 Popn Density: 121/ sq km  
 GDP per capita: US\$1,102



## People's Republic of China

Land area: 633 thou sq km  
 Population: 93.8 M  
 GDP per capita: US\$1,032  
 (figures for Yunnan and Guangxi only)

## Viet Nam

Land area: 332 thou sq km  
 Population: 83.1 M  
 Popn Density: 250/ sq km  
 GDP per capita: US\$622

## Lao PDR

Land area: 237 thou sq km  
 Population: 5.6 M  
 GDP per capita: US\$491

## Cambodia

Land area: 181 thou sq km  
 Population: 13.8 M  
 GDP per capita: US\$393



# The GMS Program

- Started in 1992 by all 6 countries
- Pragmatic, flexible, and results-oriented
- Maximizes synergies with national development efforts
- Promotes mutual trust and goodwill
- Multifaceted role of the ADB



# GMS Priority Sectors

- Transport
- Telecoms
- Energy
- Environment
- Tourism
- Trade facilitation
- Investment
- Human resource development
- Agriculture



**The GMS Vision:** A Mekong subregion that is more integrated, prosperous and harmonious

**Connectivity**  
**Competitiveness**  
**Community** } **3 Cs**







# Improving Competitiveness

- Transport and trade facilitation
- Promotion of the GMS as a single tourist destination
- Regional power interconnection and trade
- Expansion of cross-border agricultural trade
- Building capacity for development management





# Cross-Border Transport Facilitation in the GMS

## Coverage

- Facilitation of Frontier-Crossing Formalities
- Exchange of Traffic Rights

## Components

- Framework Agreement
- Annexes and Protocols (A&P)
- MOUs for Pilot Implementation



# CBTA ROAD MAP

**1999-2003**

**CBTA Framework Agreement – Signed & Ratified**

**Signing of CBTA**

LAO – Nov. 1999  
 THA – Nov. 1999  
 VIE – Nov. 1999  
 CAM – Nov. 2001  
 PRC – Nov. 2002  
 MYA – Sept. 2003

**Ratification of CBTA by December 2003**

**2003-2005**

**20 Annexes & Protocols (A&P) - Negotiation**

**Signing of 20 A&P**

16 A&P signed  
 4 to be signed in 2006

**Ratification of 20 A&P by 2005/2008**

CAM – None  
 PRC – None  
 LAO – 8 ratified  
 MYA – None  
 THA – None  
 VIE – 12 ratified

**2005-2008**

**CBTA (Interim) Implementation Arrangements**

**GMS Transit System**

- Road Transit Permit
- Customs Transit Documents for Goods, Vehicles, and Containers
- Establishment of the GMS Transit Guaranteeing System

**Initial Implementation at 7 Key Border Crossing Points**

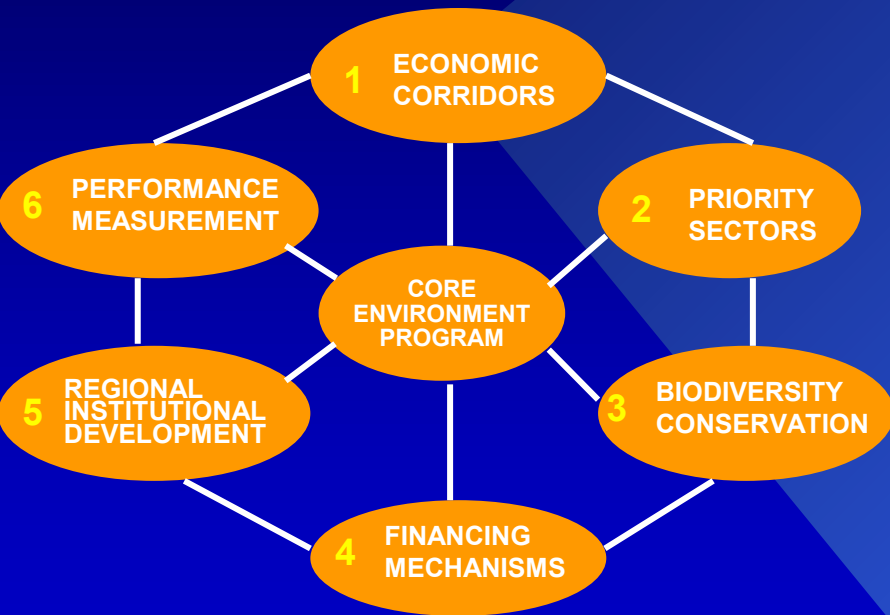
- 4 of the 7 MOUs already signed
  - Lao Bao-Dansavanh commenced
  - 3 others will commence by Dec. 2006
- 3 MOUs will be signed by Sept. 2006

**2009**

**CBTA Full Implementation**



# GMS Core Environment Program



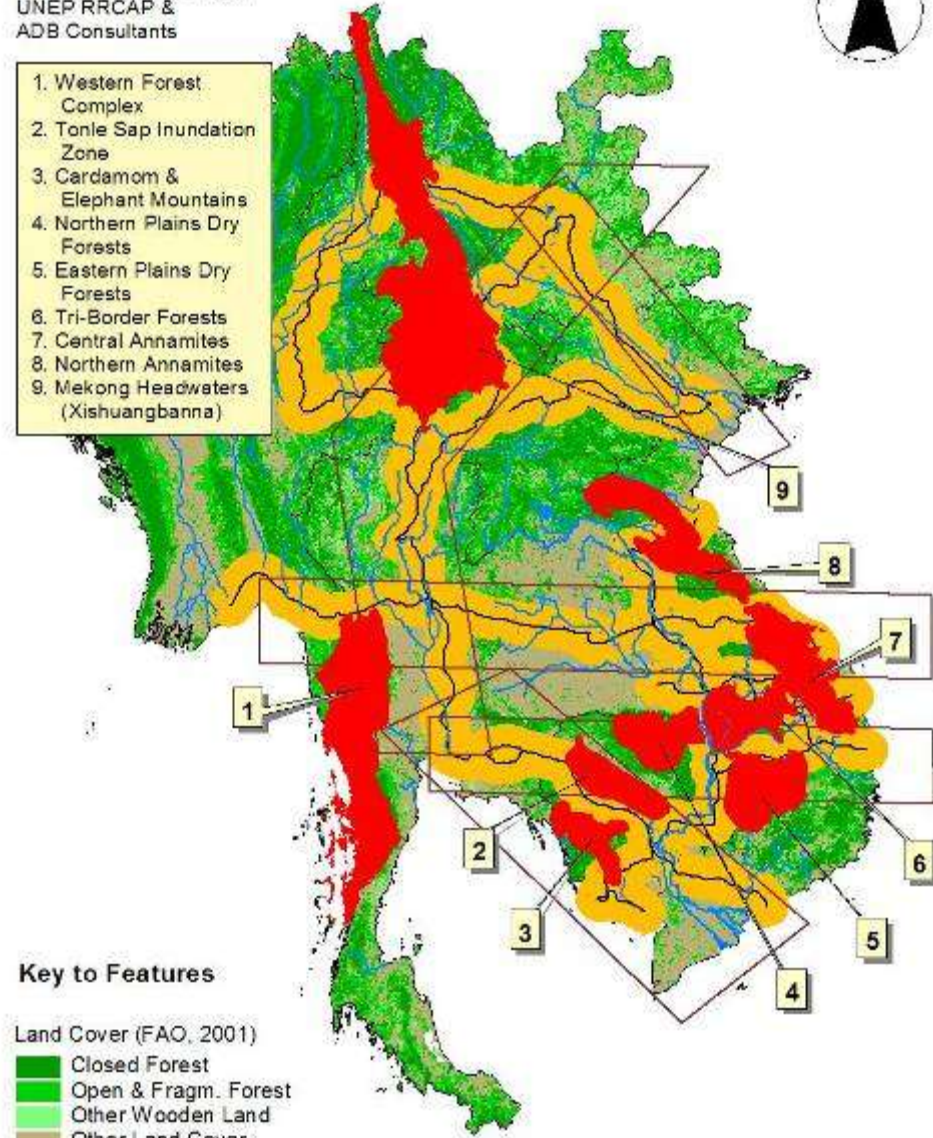
## Potential Biodiversity Corridors

0 150 300 Kilometers



Map Source and Design:  
UNEP RRCAP &  
ADB Consultants

1. Western Forest Complex
2. Tonle Sap Inundation Zone
3. Cardamom & Elephant Mountains
4. Northern Plains Dry Forests
5. Eastern Plains Dry Forests
6. Tri-Border Forests
7. Central Annamites
8. Northern Annamites
9. Mekong Headwaters (Xishuangbanna)



### Key to Features

Land Cover (FAO, 2001)

- Closed Forest
- Open & Fragm. Forest
- Other Wooden Land
- Other Land Cover

Major Rivers

Major Waterbodies

GMS Country Boundaries

Priority Corridors

Economic Corridors

Transboundary GMSEC Roads

50km Buffer along All Major Roads

# GMS Knowledge Products

- Journal of GMS Development Studies
- GMS development matrix
- Mid-term review of the GMS Strategic Framework
- Sector/strategy studies: transport, energy, tourism, agriculture, trade facilitation
- Development study for the North-South Economic Corridor (NSEC)
- GMS webpage and e-newsletter
- Country Brochures on the GMS
- Mekong Region Economic Overview



# Viet Nam in the GMS



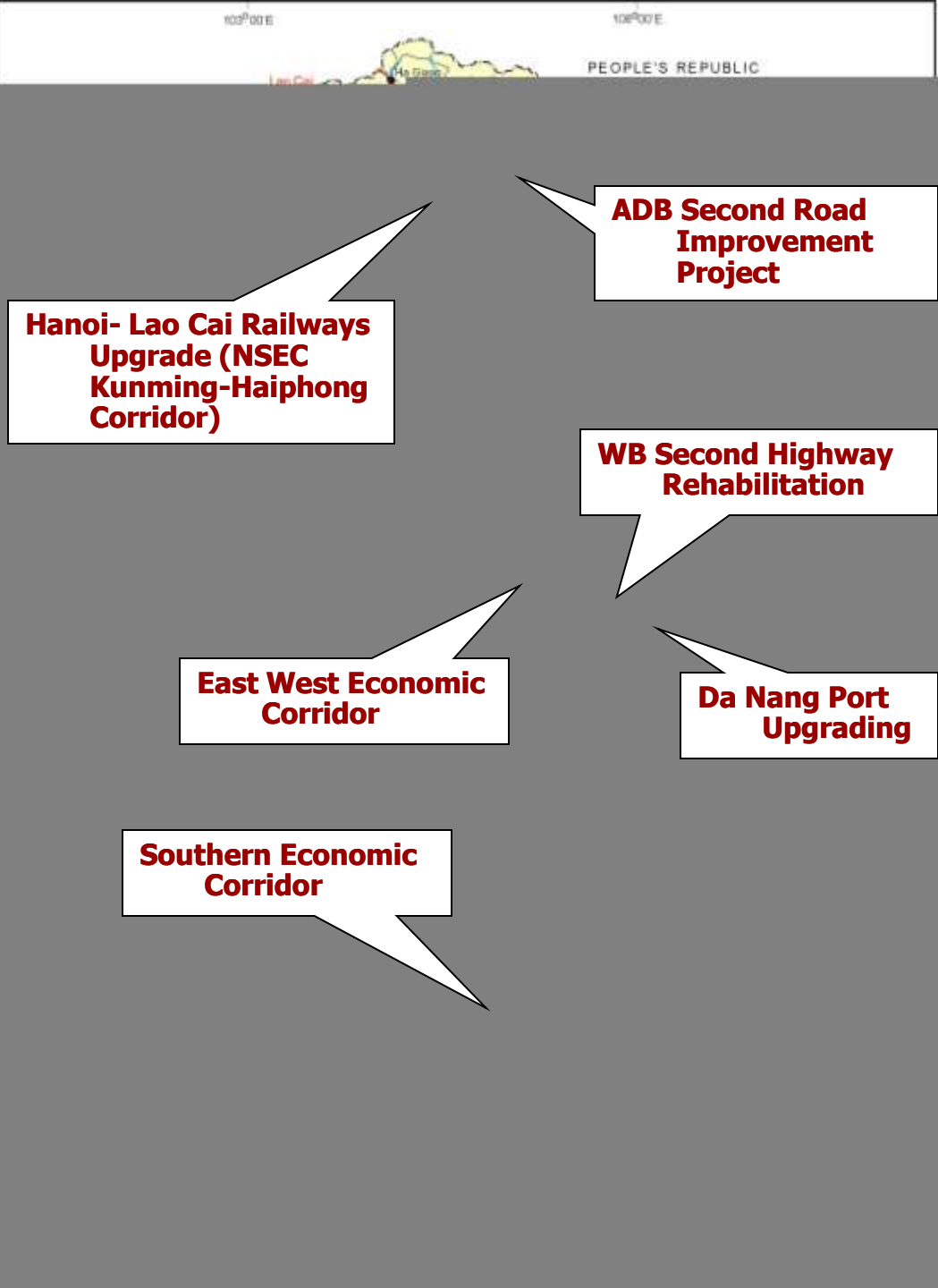


# Viet Nam in the GMS

- Greater synergy between SEDP and the GMS Program
- Viet Nam's role in the 3Cs
  - Active in economic corridor development
  - Key player in future power trade
  - GMS core environment program linked to national environment program



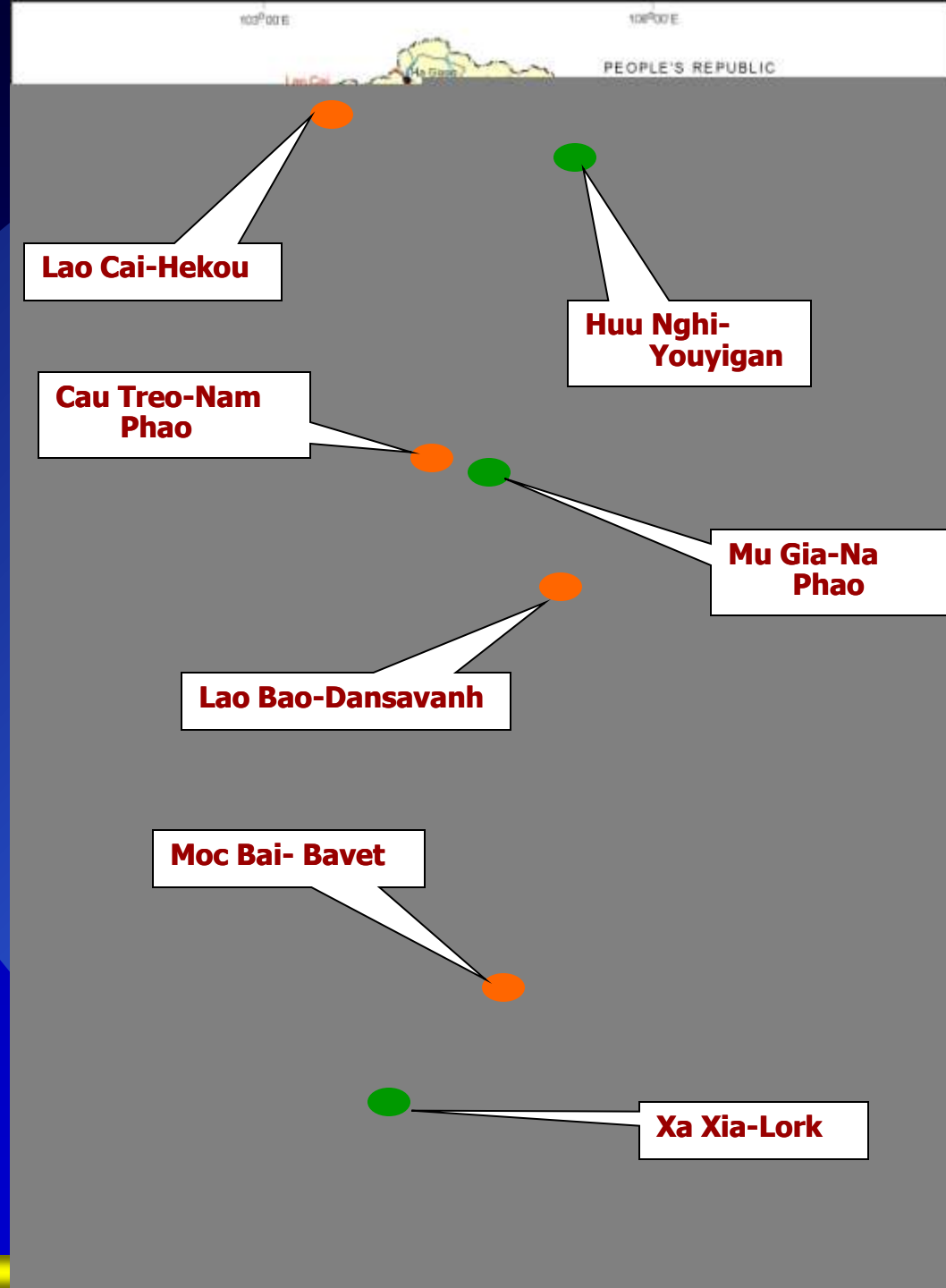
# Ongoing/ Completed GMS Projects - Transport



# CBTA: Coverage in Viet Nam

● Identified CBTA  
Border Crossings

● Potential New  
Border Crossings



# Ongoing GMS Projects

## - Tourism:

*GMS Mekong Tourism Development*



## - Environment

*Biodiversity Conservation Corridor Initiative*

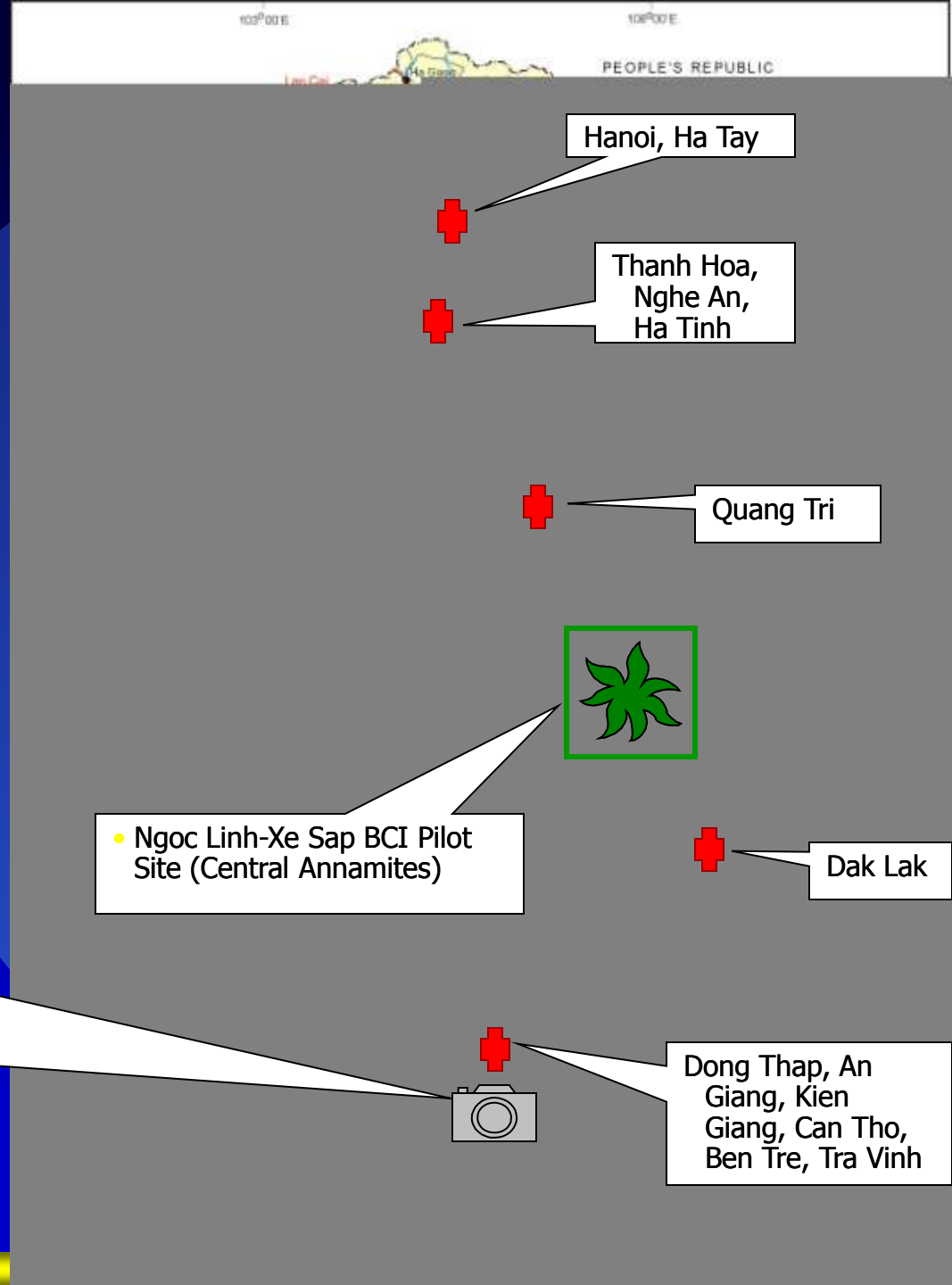


## - Health

*Regional Communicable Diseases Control*

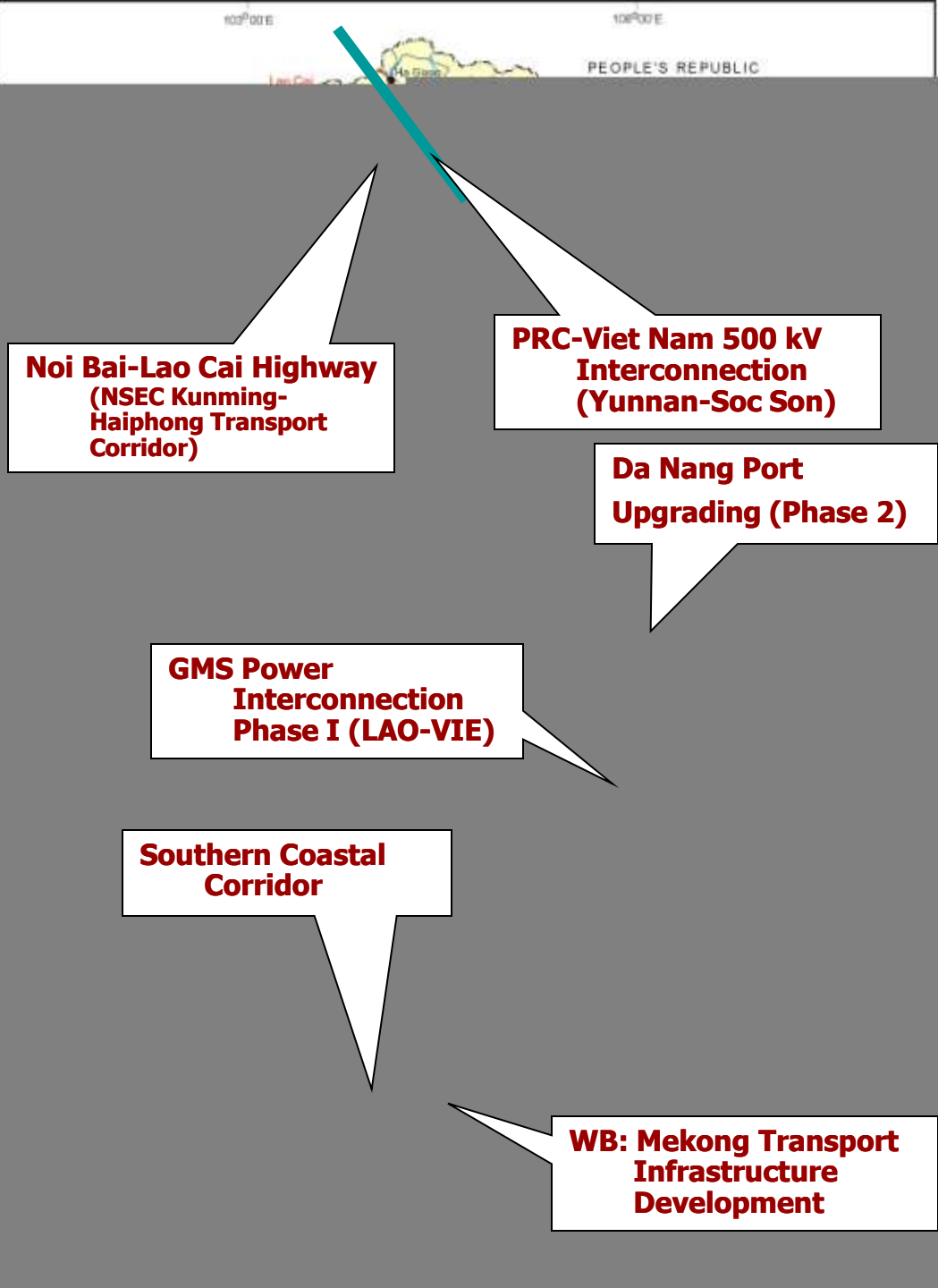


- Sam Mountain Environmental Improvement
- An Giang Tourist River Piers Improvement
- My Tho Tourist River Pier Improvement
- Tien Giang Environmental Improvement



# Proposed GMS Projects

- Transport
- Energy





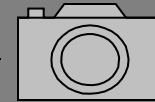
# Proposed GMS Projects

- Tourism
- Environment
- Health

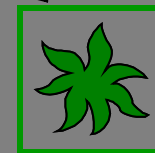
**GMS Capacity Building for HIV/ AIDS Prevention**



**GMS Sustainable Tourism Development Project**



**GMS Flood Management and Mitigation**



# Experiences from Viet Nam

- Think regionally but invest by country.
- Give priority to regional projects
- Successfully combine domestic and donor resources to invest in large scale projects.



- Emphasise on building transnational corridors
- Focus efforts to implement the annexes and protocols that Viet Nam has signed.
- Involvement of central ministries and local authorities to realise priority projects and programs.
- Strengthen coordination unit to coordinate among central and local agencies.

