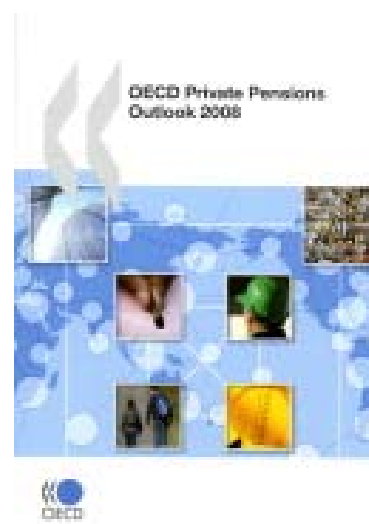


# Pension Country Profile: Mexico

(Extract from the *OECD Private Pensions Outlook 2008*)

The *OECD Private Pensions Outlook 2008* contains a set of country profiles which describe in a concise manner the design of private pension systems in individual OECD countries. This document is an extract from this publication. For further information on the *Outlook*, please see [www.oecd.org/daf/pensions/outlook](http://www.oecd.org/daf/pensions/outlook).



## Contents

Each Pension Country Profile is structured as follows:

➤ **How to Read the Country Profile**

This section explains how the information contained in the country profile is organised.

➤ **Country Profile**

The country profile is divided into six main sections:

- Demographics and macroeconomics
- Country pension design
- Pension funds data overview
- Reference information
- Overview of private pension system by type of plan and financing vehicle

➤ **Acronyms, Symbols and Conventional Signs**

➤ **Glossary**

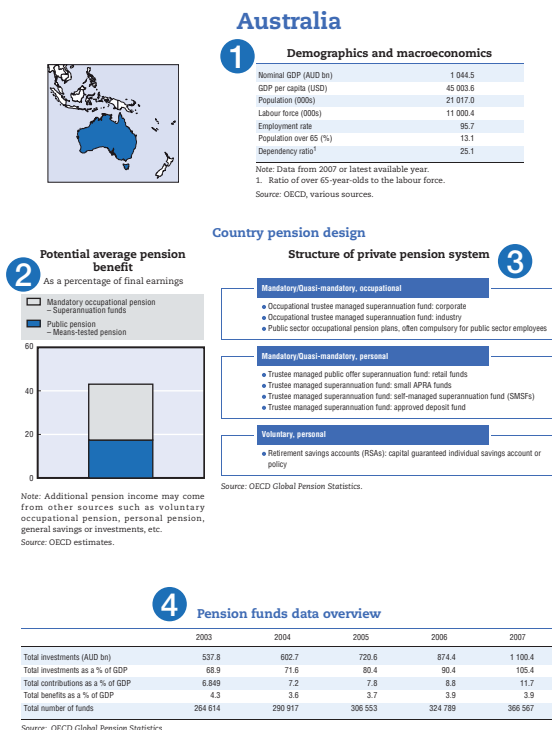
# How to Read the Country Profiles

This section provides country profiles, describing private pension arrangements in individual OECD countries. Each pension country profile is divided into six main sections:

- Demographics and macroeconomics
- Country pension design
- Pension funds data overview
- Private pension system's key characteristics
- Reference information
- Overview of private pension system by type of plan and financing vehicle

The figure below shows how the first three sections are organised on the first page of each country profile.

5. AUSTRALIA



158

PRIVATE PENSIONS OUTLOOK 2008 – ISBN 978-92-64-04438-8 – © OECD 2009

## Demographics and macroeconomics

**1** The first section presents a selection of key demographics and macroeconomics indicators that provide a sense of the size of the country and its economy. GDP figures are from the *OECD Reference*

*Series database*. Population figures are from the *OECD Population and Labour Force database*.

## Country pension design

This section is split into two parts:

### 2 Potential average pension benefit

This figure displays a broad estimate of the total pension income which an average-earning individual may receive from various sources (state, mandatory, and voluntary occupational pensions) after a full working lifetime. It is expressed as a percentage of the earnings the pensioner had just before retirement. These figures draw and expand on a microeconomic approach used in the publication *Pensions at a Glance*, looking at future individual pension entitlements under 2004 parameters and rules.

The pension incomes projected here, however, should be considered only as broad indications of what may happen, as they are conditional on a number of assumptions. It is assumed that individuals are covered by public pension plans throughout their careers. For the countries where occupational pension plans are common, average-earning individuals are assumed to be covered throughout their careers by occupational pension plans that are typical of market practice in that country. In countries where private pension accounts are compulsory, they are assumed to have participated in the compulsory system throughout their careers. Those with shorter, or periodically interrupted, careers should expect lower benefits than those which are set out in this figure.

A public pension can be an earnings-related pension (a pension computed by reference to a rate of emoluments, whether actual emoluments or not and whether final or average emoluments), a flat rate pension (a pension payable at a rate fixed otherwise than by reference to a rate of emoluments or to the rate of another pension), a minimum pension (the minimum level of pension benefits the plan pays out in all circumstances), a basic state pension (a non-earnings related pension paid by the State to

individuals with a minimum number of service years), or a means-tested pension (pension granted to a person after examination of his/her financial state).

Data cover public pensions and other mandatory or quasi-mandatory private pension plans. Voluntary plans are also included if they cover at least 30% of the working population. Additional pension income may come from other sources, such as individual savings, but these are not included in the data.

For five countries, several projections are presented as private pension systems are in a particular state of change.

### 3 Structure of private pension systems

The second part displays a bulleted list summarising the structure of private pension systems according to the pension plans currently in place in the country.

## Pension funds data overview

4 The third section presents selected pension fund indicators from 2003 to 2007 from the *OECD Global Pension Statistics* project ([www.oecd.org/daf/pensions/gps](http://www.oecd.org/daf/pensions/gps)). For further data and analysis, readers can refer to Chapter 2 of this publication.

## Private pension system's key characteristics

The information provided in this section covers eight private pension system key characteristics:

- Overview
- Coverage
- Typical plan design
- Contributions
- Benefits
- Fees
- Taxation
- Market information

Depending on data availability, these characteristics are developed for each existing category of pension plan (mandatory vs. voluntary pension plan, occupational vs. personal pension plan). Information provided in this section refers to December 2007 or to the latest available year.

## Reference information

This section includes references to key legislation reforms, provides the name of regulatory and supervisory authorities and displays official statistical references and sources on private pensions.

## Overview of private pension systems by type of plan and financing vehicle

This last section gives a detailed description of the various private pension plans found in each country as well as the statistical data coverage of the *OECD Global Pension Statistics*.

The following figure gives an example of such an overview. The first two columns provide the name and the description of each pension plan. Pension plans included in the *OECD GPS database* are marked with a tick in the next column, excluding OECD estimates. Under the column headings “Type of plan” and “Financing vehicle” are given the correspondence of each pension plan with the OECD Classification by funding vehicle and by type (see OECD (2005), *Private Pensions: OECD Classification and Glossary*, OECD, Paris).

**Overview of private pension system by type of plan and financing vehicle**

	Included in OECD GPS database	Type of plan				Financing vehicle			
		Voluntary	Mandatory/Quasi-mandatory	Occupational	Personal	Pension fund	Book reserve	Pension insurance contract	Banks or investment companies
Occupational trustee managed superannuation fund: corporate	✓		✓	✓		✓			
Occupational trustee managed superannuation fund: industry	✓		✓	✓		✓			
Trustee managed public offer superannuation fund: retail funds	✓		✓		✓	✓			
Trustee managed superannuation fund: small APRA funds	✓		✓		✓	✓			
Retirement savings accounts (RSAs): capital guaranteed individual savings account or policy		✓			✓			✓	✓

Source: OECD Global Pension Statistics.

# Mexico



## Demographics and macroeconomics

Nominal GDP (MXN bn)	9 754.8
GDP per capita (USD)	8 437.4
Population (000s)	105 790.7
Labour force (000s)	44 047.6
Employment rate	96.6
Population over 65 (%)	5.5
Dependency ratio <sup>1</sup>	13.1

Note: Data from 2007 or latest available year.

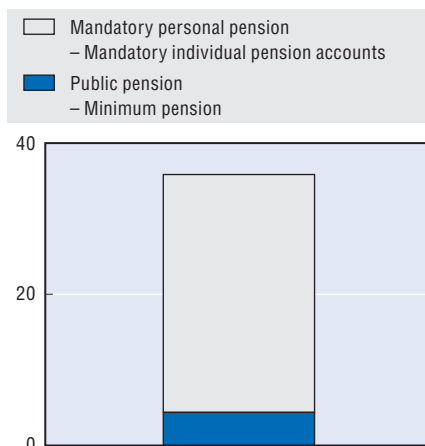
1. Ratio of over 65-year-olds to the labour force.

Source: OECD, various sources.

## Country pension design

### Potential average pension benefit

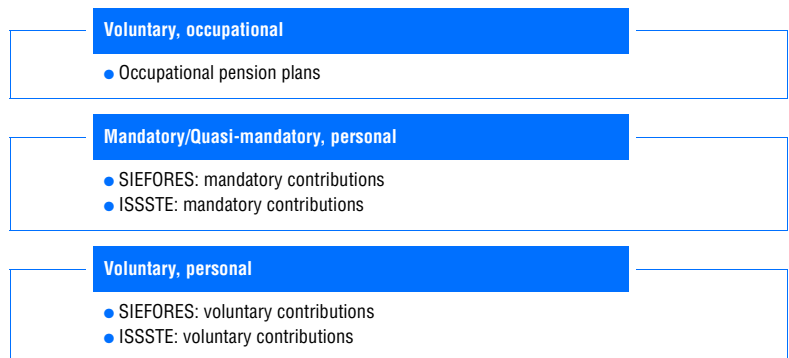
As a percentage of final earnings



Note: Additional pension income may come from other sources such as voluntary occupational pension, general savings or investments, etc.

Source: OECD estimates.

### Structure of private pension system



Source: OECD Global Pension Statistics.

## Pension funds data overview

	2003	2004	2005	2006	2007
Total investments (MXN bn)	401.5	481.9	832.1	1 051.8	1 181.5
Total investments as a % of GDP	5.8	6.3	10.0	11.5	12.1
Total contributions as a % of GDP	0.9	0.8	0.8	1.1	0.9
Total benefits as a % of GDP	0.1	0.1	0.1	0.2	0.2
Total number of funds	12	26	1 331	1 342	1 378

.. : means not available.

Note: The break in series in 2005 is due to the inclusion of occupational plans, not included in previous years.

Source: OECD Global Pension Statistics.

StatLink <http://dx.doi.org/10.1787/517551817532>

## Private pension system's key characteristics

### **Occupational voluntary**

#### *Overview*

Occupational pension plans may be established by employers or groups of employers. They are either book reserved or financed through trusts administered by financial institutions. Seventy per cent of plans are defined benefit in nature, 20% are hybrid, and 10% defined contribution.

#### *Coverage*

Employers may establish an occupational pension on a voluntary basis, while employees are usually automatically enrolled in a plan as part of their employment contract. In 2007 the occupational pension system covered less than 3% of the labour force.

#### *Typical plan design*

Defined benefit plans are usually based on final salary – the last month or year prior to termination of employment. Retirement ages vary, but in most plans (over 60%) the age is over 60. Benefits may be paid in any form, with 80% of plans paying out benefits in annuities and 20% in lump sums.

#### *Taxation*

Contributions are tax-exempt up to a ceiling of 12.5% of payroll, while benefits are exempt up to nine times the annual minimum wage and the remainder is taxed at standard income rates.

### **Personal mandatory**

#### *Overview*

A new system of mandatory pension funds based on defined contribution individual retirement accounts was introduced in July 1997. These funds (SIEFORES) are managed by specialised providers (AFORES).

#### *Coverage*

Participation in the private scheme is mandatory for all employees, whether they contributed to the old pension system or not. The self-employed are not required to participate. Public employees were included in the new system after legislation was reformed in 2008.

#### *Contributions*

Under the mandatory retirement account system, employers (5.15%), employees (1.125%), and the government (0.225%) together contribute a total of 6.5% of taxable income to individual accounts plus the social fee, which is a fixed amount, paid by the government, equivalent to 5% of 1997's minimum wage (this amount is updated in accordance with changes in the Consumer Price Index). Unlike many other Latin American countries, where disability and old-age survivor insurance schemes are separate private contracts funded solely by employees, Mexico's IMSS (the country's old social security system) administers these programmes, financed by contributions totalling 2.5% of taxable income (0.625% from employees, 1.75% from employers, and 0.125% from the government).

### **Benefits**

The system is defined contribution in nature for retirement benefits, but it is defined benefit for disability and old-age survivor insurance. Retirement benefits become available at the age of 65 after 1 250 weeks of contributions, and disability and life insurance benefits after 250 weeks of contributions. Employees who reach retirement age without having contributed for the required number of weeks may withdraw the entire balance of their retirement account as a lump sum. If after 1 250 weeks of contribution an employee does not have a sufficient balance in his/her account to get a minimum pension, the government pays the minimum pension.<sup>5</sup> Employees may retire early when the balance of their account can yield benefit equal to, or greater than, 130% of the minimum pension in force at the time. Upon retirement, workers may either use the proceeds of their account to purchase an annuity from an insurance company, or make programmed withdrawals.

Employees who contributed under the old pay-as-you-go (PAYG) pension plan may choose either to receive their benefits in accordance with that system, or to use their savings under the defined contribution scheme. If they choose the PAYG benefit arrangement, the balance of their individual account is transferred to the government.

### **Fees**

As of 2008, fees may be determined only as percentages of assets under management. In 2007, they accounted for over 2%.

### **Taxation**

Investment income is tax-exempt. Members' contributions are taxed, while employers' contributions may be deducted from profits for tax purposes. Benefits are tax-exempt up to a ceiling set at nine times the annual minimum salary. Benefits above this limit are taxed as income.

### **Personal voluntary**

#### **Overview**

Voluntary pension funds are defined contribution funds managed by AFOREs and financial institutions, such as insurance companies and mutual funds. AFOREs that administer voluntary pension funds have the same institutional framework as those managing mandatory funds.

Since the beginning of the system in 1997, voluntary contributions were allowed. In December 2002, AFOREs have been allowed to manage savings sub-accounts for voluntary contributions, which are independent of the mandatory individual capitalisation accounts. These additional sub-accounts were created for long-term voluntary contributions and complementary retirement contributions.

#### **Coverage**

Both employees and the self-employed may participate in the voluntary pension scheme. Federal state employees and those who work for certain public organisations and municipalities may also make voluntary contributions.

## Contributions

Supplementary contributions to a mandatory pension fund are permitted and can be paid by employers and/or employees, either regularly or on an *ad hoc* basis. Voluntary contributions by employees are tax deductible up to a ceiling of five times the annual minimum salary or up to 10% of the annual income, whichever results smaller.

## Benefits

Members can transfer all, or part of, their savings to an individual capitalisation account when they retire in order to increase the size of their pensions. Additionally, they may withdraw their voluntary social security savings at any point in their working life, and not only on retirement, depending on the sub-account.

## Market information

### Occupational voluntary

In 2007 there were over 1 700 occupational pension plans with a total of more than 1.1 million members. Half of these plans were administered by banks, accounting for over 80% of total assets under management, or over MXN 330 billion (USD 30 billion).

### Personal mandatory

In December 2007, the mandatory private pension system had 38.6 million members, and 21 AFOREs were managing its assets. Individuals are free to choose their AFOREs, which are regulated and supervised by the National Commission for the Retirement Savings System (CONSAR). A law passed in 2007 instituted an individual retirement account programme for civil servants and created a special AFORE, called the *PensionISSSTE*, to manage the scheme for its first three years. Public employees may switch to another AFORE only once the three-year period has elapsed.

Since 2008, each AFORE has been allowed to offer five SIEFOREs (SIEFORE 1 to 5) with different types of investment strategies and risk levels based on life cycle funds.

In December 2007 pension fund management companies had accumulated assets equivalent to over MXN 831.4 billion (USD 76.2 billion), or 8.5% of Mexico's GDP.

There are no legal requirements for a minimum rate of return to be credited to a member's individual account.

### Personal voluntary

At the end of 2007 around 3 million workers had some kind of voluntary savings in the AFOREs, with pension funds having accumulated assets equivalent to MXN 2.7 billion (USD 241 million).

## Reference information

### Key legislation

The Retirement Savings System Law of 1996 defines the structure and powers of CONSAR and regulates the establishment, operation, and supervision of AFOREs and SIEFOREs. The 2007 reform set the balance fee as the only valid fee allowed; it also introduced the net return index as the main competition driver between AFOREs. Secondary regulation allowed the creation of three new funds (SIEFOREs).

The CONSAR Circular 15-19 of 2007 authorised changes in investment regulation, which included the approval of new types of investment instruments (share certificates, participation certificates, structured bonds and REITS) and the allocation limits to the new funds.

### Key regulatory and supervisory authorities

The *Comisión Nacional del Sistema de Ahorro para el Retiro* (CONSAR), or National Commission for the Retirement Savings System, regulates and supervises the private fund management companies (AFORES), [www.consar.gob.mx/](http://www.consar.gob.mx/).

### Key official statistical references and sources on private pensions

*Comisión Nacional del Sistema de Ahorro para el Retiro* (CONSAR), or National Commission for the Retirement Savings System, [www.consar.gob.mx/](http://www.consar.gob.mx/).

OECD, *Global Pension Statistics Project*, [www.oecd.org/daf/pensions/gps](http://www.oecd.org/daf/pensions/gps).

## Overview of private pension system by type of plan and financing vehicle

	Included in OECD GPS database	Type of plan				Financing vehicle			
		Voluntary	Mandatory/Quasi-mandatory	Occupational	Personal	Pension fund	Book reserve	Pension insurance contract	Banks or investment companies
SIEFORES: mandatory contributions	Contribution pension scheme comprising individual retirement accounts in open funds (SIEFORES), privately administered by specialised institutions (AFORES).	✓	✓		✓	✓			
SIEFORES: voluntary contributions	Individuals can make additional voluntary contributions. The self-employed may also open special accounts to make voluntary contributions.	✓			✓	✓			
ISSTE: mandatory contributions	Federal government employees retirement saving system (ISSSTE), administered by the Central Bank ( <i>Banco de México</i> ). As of mid-2008, the assets of federal government employees will be managed by a public pension fund manager.		✓	✓	✓	✓			✓
Occupational pension plans	Private occupational pension plans sponsored by non-government employers must be registered with CONSAR. They comprise defined benefit, defined contribution, and hybrid plans. Benefit can be a pension, lump sum, or a combination of both.	✓		✓		✓	✓		✓

Source: OECD Global Pension Statistics.



**Notes**

1. Statistics Canada (2004), *Pension Plans in Canada*, Pensions and Wealth Research Series, 1 January.
2. Statistics Canada.
3. The Reserve Fund is established with 5% of the pension company profits.
4. The TFR is a sort of severance pay scheme that the employer has to pay to an employee in the case of his dismissal or retirement. Every month the employer sets aside 6.91% of the gross salary of the employee; every year the accumulated stock of the TFR, which is accounted as a book reserve in the balance sheet of the employer, is appreciated according to a CPI-linked formula.
5. Minimum pension is equivalent to a 1997's monthly minimum wage updated in accordance with inflation.
6. The average monthly wage in Poland is PLN 2 869.69 (USD 1 025) before tax and social security contributions. The net wage is around 70% of the gross.
7. Contribution rates and information on rates of contracting out were obtained from the Department for Work and Pensions' report entitled *Employers' Pension Provision Survey 2005*.

## Acronyms, Symbols and Conventional Signs

<b>AFP</b>	Contractual Early Retirement Plan
<b>AGIRC</b>	<i>Association Générale des Institutions de Retraite des Cadres</i>
<b>ALM</b>	Asset Liability Management
<b>APRA</b>	Australian Prudential Regulation Authority
<b>ARRCO</b>	<i>Association des Régimes de Retraites Complémentaires</i>
<b>ASSEP</b>	<i>Association d'Épargne Pension</i>
<b>AVC</b>	Additional Voluntary Contributions
<b>CBFA</b>	<i>Commission Bancaire, Financière et des Assurances</i>
<b>CEE</b>	Central and Eastern Europe
<b>CONSAR</b>	National Commission for the Retirement Savings System
<b>CPP</b>	Canadian Pension Plan
<b>CSSF</b>	<i>Commission de Surveillance du Secteur Financier</i>
<b>DB</b>	Defined Benefit
<b>DBO</b>	Defined Benefit Obligation
<b>DC</b>	Defined Contribution
<b>TyEL</b>	Earnings-related provisions for private-sector workers
<b>EEA</b>	European Economic Area
<b>EET</b>	Exempt-Exempt-tax
<b>EPI</b>	Employee Pension Insurance
<b>EPF</b>	Employees' Pension Fund
<b>FMA</b>	Financial Market Authority
<b>GDP</b>	Gross Domestic Product
<b>GPS</b>	Global Pension Statistics
<b>HMRC</b>	HM Revenue and Customs
<b>IBA</b>	Income Base Amount
<b>IKE</b>	Individual Retirement Account
<b>IRA</b>	Individual Retirement Account
<b>ITP</b>	Collectively bargained pension plan for white-collar employees
<b>KNF</b>	Polish Financial Supervisory Authority
<b>LDI</b>	Liability-Driven Investment
<b>LO</b>	Confederation of Trade Unions
<b>MO</b>	Mandatory Occupational
<b>MP</b>	Mandatory Personal
<b>NHO</b>	Confederation of Norwegian Business and Industry
<b>OFE</b>	Open Pension Fund
<b>PAMC</b>	Pension Asset Management Company
<b>PAYG</b>	Pay-as-you-go

<b>PEE</b>	<i>Plan Épargne Entreprise</i>
<b>PERCO</b>	<i>Plan d'Épargne pour la Retraite Collectif</i>
<b>PERP</b>	<i>Plan d'Épargne Retraite Populaire</i>
<b>PIP</b>	Personal pension plan set up through life insurance contract
<b>PPE</b>	Employee Pension Fund
<b>PPM</b>	Premium Pension Authority
<b>PPRF</b>	Public Pension Reserve Fund
<b>PRSA</b>	Personal Retirement Savings Account
<b>QMO</b>	Quasi-Mandatory Occupational
<b>RAC</b>	Retirement Annuity Contract
<b>S2P</b>	State Second Pension
<b>SAF</b>	Swedish Employers' Confederation
<b>SEPCAV</b>	<i>Société d'Épargne Pension à Capital Variable</i>
<b>SPS</b>	Severance Pay System
<b>SIMPLE</b>	Savings Incentive Match Plan for Employees
<b>SNA</b>	System of National Account
<b>SPMC</b>	Supplementary Pension Management Company
<b>SSRF</b>	Social Security Reserve Fund
<b>SWF</b>	Sovereign Wealth Fund
<b>TFR</b>	<i>Trattamento di Fine Rapporto</i>
<b>TQPP</b>	Tax Qualified Pension Plan
<b>UK</b>	United Kingdom
<b>US</b>	United States of America
<b>VO</b>	Voluntary Occupational
<b>VP</b>	Voluntary Personal

## Symbols

000s	Thousands	JPY	Yen
m	Million	KRW	South Korean won
bn	Billion	MXN	Mexican peso
AUD	Australian dollar	NZD	New Zealand dollar
EUR	Euro	NOK	Norwegian krone
USD	United States dollar	PLN	Zloty
CAD	Canadian dollar	SKK	Slovak koruna
CZK	Czech koruna	SEK	Swedish krona
DKK	Danish krone	CHF	Swiss franc
HUF	Forint	TRY	New Turkish Lira
ISK	Icelandic krona	GBP	British pound

## Conventional signs

n.a.: not applicable

n.d. / ..: not available

## Country ISO code

Australia	AUS	Korea	KOR
Austria	AUT	Luxembourg	LUX
Belgium	BEL	Mexico	MEX
Canada	CAN	Netherlands	NLD
Czech Republic	CZE	New Zealand	NZL
Denmark	DNK	Norway	NOR
Finland	FIN	Poland	POL
France	FRA	Portugal	PRT
Germany	DEU	Slovak Republic	SVK
Greece	GRC	Spain	ESP
Hungary	HUN	Sweden	SWE
Iceland	ISL	Switzerland	CHE
Ireland	IRL	Turkey	TUR
Italy	ITA	United Kingdom	GBR
Japan	JPN	United States	USA

## Glossary

Most of the definitions below draw on the publication *Private Pensions: OECD Classification and Glossary*. It can be downloaded at the following address: [www.oecd.org/dataoecd/0/49/38356329.pdf](http://www.oecd.org/dataoecd/0/49/38356329.pdf).

Term	Definition
Active member	A pension plan member who is making contributions (and/or on behalf of whom contributions are being made) and is accumulating assets or has accrued assets in the past and is not yet retired.
Annuity	A form of financial contract mostly sold by life insurance companies that guarantees a fixed or variable payment of income benefit (monthly, quarterly, half-yearly, or yearly) for the life of a person (the annuitant) or for a specified period of time. It is different from a life insurance contract which provides income to the beneficiary after the death of the insured. An annuity may be bought through instalments or as a single lump sum. Benefits may start immediately or at a pre-defined time in the future or at a specific age.
Asset allocation	The spread of fund investments among different investment forms.
Asset manager	The individual(s) or entity(ies) endowed with the responsibility to physically invest the pension fund assets. Asset managers may also set out the investment strategy for a pension fund.
Basic state pension	A non-earning related pension paid by the State to individuals with a minimum number of service years.
Beneficiary	An individual who is entitled to a benefit (including the plan member and dependants).
Benefit	Payment made to a pension fund member (or dependants) after retirement.
Book reserved pension plans	Sums entered in the balance sheet of the plan sponsor as reserves or provisions for occupational pension plan benefits. Some assets may be held in separate accounts for the purpose of financing benefits, but are not legally or contractually pension plan assets. Most OECD countries do not allow this method of financing. Those that do usually require these plans to be insured against bankruptcy of the plan sponsor through insolvency guaranty arrangement.
Closed pension funds	Funds that support only pension plans that are limited to certain employees ( <i>e.g.</i> those of an employer or group of employers).
Contribution	A payment made to a pension plan by a plan sponsor or a plan member.
Contribution rate	The amount (typically expressed as a percentage of the contribution base) that is needed to be paid into the pension fund.
Deferred member	A pension plan member that no longer contributes to or accrues benefits from the plan but has not yet begun to receive retirement benefits from that plan.
Deferred pension	A pension arrangement in which a portion of an employee's income is paid out at a date after which that income is actually earned.
Deferred retirement	A situation when an individual decides to retire later and draw the pension benefits later than their normal retirement age.
Defined benefit (DB) occupational pension plans	Occupational plans other than defined contribution plans. DB plans generally can be classified into one of three main types, "traditional", "mixed" and "hybrid" plans.
"Traditional" DB plan	A DB plan where benefits are linked through a formula to the members' wages or salaries, length of employment, or other factors.

Term	Definition
"Hybrid" DB plan	A DB plan where benefits depend on a rate of return credited to contributions, where this rate of return is either specified in the plan rules, independently of the actual return on any supporting assets ( <i>e.g.</i> fixed, indexed to a market benchmark, tied to salary or profit growth, etc.), or is calculated with reference to the actual return of any supporting assets and a minimum return guarantee specified in the plan rules.
"Mixed" DB plan	A DB plan that have two separate DB and DC components but which are treated as part of the same plan.
Defined contribution (DC) occupational pension plans	Occupational pension plans under which the plan sponsor pays fixed contributions and has no legal or constructive obligation to pay further contributions to an ongoing plan in the event of unfavourable plan experience.
Dependant	An individual who is financially dependent on a (passive or active) member of a pension scheme.
Dependency ratio	Typically defined as the ratio of non-active age to those of active age in a given population.
Final average earnings	The fund member's earnings that are used to calculate the pension benefit in a defined benefit plan; it is typically the earnings of the last few years prior to retirement.
Fund member	An individual who is either an active (working or contributing, and hence actively accumulating assets) or passive (retired, and hence receiving benefits), or deferred (holding deferred benefits) participant in a pension plan.
Funded pension plans	Occupational or personal pension plans that accumulate dedicated assets to cover the plan's liabilities.
Funding	The act of accumulating assets in order to finance the pension plan.
Funding level	The relative value of a scheme's assets and liabilities, usually expressed as a percentage figure.
Funding rules	Regulation that requires the maintenance of a certain level of assets in a pension fund in relation to pension plan liabilities.
Gross rate of return	The rate of return of an asset or portfolio over a specified time period, prior to discounting any fees of commissions.
Group pension funds	Multi-employer pension funds that pool the assets of pension plans established for related employers.
Industry pension funds	Funds that pool the assets of pension plans established for unrelated employers who are involved in the same trade or business.
Mandatory contribution	The level of contribution the member (or an entity on behalf of the member) is required to pay according to scheme rules.
Mandatory occupational plans	Participation in these plans is mandatory for employers. Employers are obliged by law to participate in a pension plan. Employers must set up (and make contributions to) occupational pension plans which employees will normally be required to join. Where employers are obliged to offer an occupational pension plan, but the employees' membership is on a voluntary basis, these plans are also considered mandatory.
Mandatory personal plans	These are personal plans that individuals must join or which are eligible to receive mandatory pension contributions. Individuals may be required to make pension contributions to a pension plan of their choice normally within a certain range of choices or to a specific pension plan.
Minimum pension	The minimum level of pension benefits the plan pays out in all circumstances.
Multi-employer pension funds	Funds that pool the assets of pension plans established by various plan sponsors. There are three types of multi-employer pension funds: <i>a)</i> for related employers <i>i.e.</i> companies that are financially connected or owned by a single holding group (group pension funds); <i>b)</i> for unrelated employers who are involved in the same trade or business (industry pension funds); <i>c)</i> for unrelated employers that may be in different trades or businesses (collective pension funds).
Net rate of return	The rate of return of an asset or portfolio over a specified time period, after discounting any fees of commissions.
Normal pension age	Age from which the individual is eligible for pension benefits.
Occupational pension plans	Access to such plans is linked to an employment or professional relationship between the plan member and the entity that establishes the plan (the plan sponsor). Occupational plans may be established by employers or groups thereof ( <i>e.g.</i> industry associations) and labour or professional associations, jointly or separately. The plan may be administered directly by the plan sponsor or by an independent entity (a pension fund or a financial institution acting as pension provider). In the latter case, the plan sponsor may still have oversight responsibilities over the operation of the plan.
Open pension funds	Funds that support at least one plan with no restriction on membership.

Term	Definition
Overfunding	The situation when the value of a plan's assets are more than its liabilities, thereby having an actuarial surplus.
Pension assets	All forms of investment with a value associated to a pension plan.
Pension funds	The pool of assets forming an independent legal entity that are bought with the contributions to a pension plan for the exclusive purpose of financing pension plan benefits. The plan/fund members have a legal or beneficial right or some other contractual claim against the assets of the pension fund. Pension funds take the form of either a special purpose entity with legal personality (such as a trust, foundation, or corporate entity) or a legally separated fund without legal personality managed by a dedicated provider (pension fund management company) or other financial institution on behalf of the plan/fund members.
Pension insurance contracts	Insurance contracts that specify pension plans contributions to an insurance undertaking in exchange for which the pension plan benefits will be paid when the members reach a specified retirement age or on earlier exit of members from the plan. Most countries limit the integration of pension plans only into pension funds, as the financial vehicle of the pension plan. Other countries also consider the pension insurance contract as the financial vehicle for pension plans.
Pension plan	A legally binding contract having an explicit retirement objective (or in order to satisfy tax related conditions or contract provisions the benefits cannot be paid at all or without a significant penalty unless the beneficiary is older than a legally defined retirement age). This contract may be part of a broader employment contract, it may be set forth in the plan rules or documents, or it may be required by law. In addition to having an explicit retirement objective, pension plans may offer additional benefits, such as disability, sickness, and survivors' benefits.
Pension plan sponsor	An institution ( <i>e.g.</i> company, industry/ employment association) that designs, negotiates, and normally helps to administer an occupational pension plan for its employees or members.
Personal pension plans	Access to these plans does not have to be linked to an employment relationship. The plans are established and administered directly by a pension fund or a financial institution acting as pension provider without any intervention of employers. Individuals independently purchase and select material aspects of the arrangements. The employer may nonetheless make contributions to personal pension plans. Some personal plans may have restricted membership.
Private pension funds	A pension fund that is regulated under private sector law.
Private pension plans	A pension plan administered by an institution other than general government. Private pension plans may be administered directly by a private sector employer acting as the plan sponsor, a private pension fund or a private sector provider. Private pension plans may complement or substitute for public pension plans. In some countries, these may include plans for public sector workers.
Projected Benefit Obligation (PBO)	The actuarial present value of vested and non-vested benefits attributed to the plan through the pension benefit formula for service rendered to that date based on employees' future salary levels.
Protected pension plan	A plan (personal pension plan or occupational defined contribution pension plan) other than an unprotected pension plan. The guarantees or promises may be offered by the pension plan/fund itself or the plan provider ( <i>e.g.</i> deferred annuity, guaranteed rate of return).
Public pension funds	Pension funds that are regulated under public sector law.
Public pension plans	Social security and similar statutory programmes administered by the general government (that is central, state, and local governments, as well as other public sector bodies such as social security institutions). Public pension plans have been traditionally PAYG financed, but some OECD countries have partial funding of public pension liabilities or have replaced these plans by private pension plans.
Rate of return	The income earned by holding an asset over a specified period.
Replacement rate	The ratio of an individual's (or a given population's) (average) pension in a given time period and the (average) income in a given time period.
Separate accounts	A pension fund that is legally segregated from both the plan sponsor and a financial institution that acts as the manager of the fund on behalf of the plan member.
Single employer pension funds	Funds that pool the assets of pension plans established by a single sponsor.
Trust	A legal scheme, whereby named people (termed trustees) hold property on behalf of other people (termed beneficiaries).
Trustee	A person or a company appointed to carry out the tasks of the trust.
Underfunding	The situation when the value of a plan's assets are less than its liabilities, thereby having an actuarial deficiency.

---

Term	Definition
Unfunded pension plans	Plans that are financed directly from contributions from the plan sponsor or provider and/ or the plan participant. Unfunded pension plans are said to be paid on a current disbursement method (also known as the pay as you go, PAYG, method). Unfunded plans may still have associated reserves to cover immediate expenses or smooth contributions within given time periods. Most OECD countries do not allow unfunded private pension plans.
Unprotected pension plan	A plan (personal pension plan or occupational defined contribution pension plan) where the pension plan/fund itself or the pension provider does not offer any investment return or benefit guarantees or promises covering the whole plan fund.
Voluntary contribution	An extra contribution paid in addition to the mandatory contribution a member can pay to the pension fund in order to increase the future pension benefits.
Voluntary occupational pension plans	The establishment of these plans is voluntary for employers (including those in which there is automatic enrolment as part of an employment contract or where the law requires employees to join plans set up on a voluntary basis by their employers). In some countries, employers can, on a voluntary basis, establish occupational plans that provide benefits that replace at least partly those of the social security system. These plans are classified as voluntary, even though employers must continue sponsoring these plans in order to be exempted (at least partly) from social security contributions.
Voluntary personal pension plans	Participation in these plans is voluntary for individuals. By law individuals are not obliged to participate in a pension plan. They are not required to make pension contributions to a pension plan. Voluntary personal plans include those plans that individuals must join if they choose to replace part of their social security benefits with those from personal pension plans.

---