



OECD CHAMPION MAYORS
for Inclusive Growth

Promoting climate action and resilience through a territorial approach

6 December 2023 3:00 PM - 4:00 PM CET COP28 Japan Pavilion & livestream

This session will launch the OECD report “**A Territorial Approach to Climate Action and Resilience**” that synthesises three years of work under the OECD TACAR Programme, supported by the government of Japan.

Register now



Yutaka Matsuzawa
Vice-Minister for Global-
Environmental Affairs,
Japan



Lamia Kamal-Chaoui
Director, OECD Centre for
Entrepreneurship, SMEs,
Regions and Cities



Angie Fyfe
Executive Director
ICLEI Local Governments
for Sustainability, USA



Ronan Dantec
President
Climate Chance
Association



Katja Dörner
Mayor
City of Bonn
Germany



Jaime Pumarejo
Mayor
City of Barranquilla
Colombia



Raffi Balian
Senior Policy Advisor Office
of the U.S. Presidential Envoy
for Climate, U.S.A



<https://oecdcoigito.blog/>



@OECD_local



/oecd-local



www.oecd.org/cfe



環境省
Ministry of the Environment

Promoting climate action and resilience through a territorial approach

Subnational governments account for:



69%

of climate related investment



63%

of climate-related expenditure

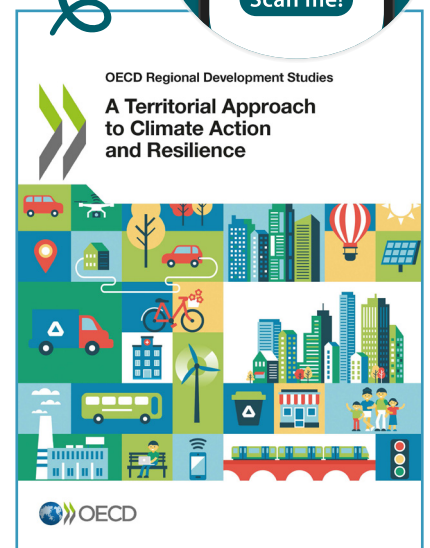
The path to net zero is different in different places:



Road transport emissions per person are over **3X** higher in remote rural regions than in large metropolitan regions.

Climate risks are different in different places:

In ~1/2 of OECD cities, temperatures were **3°C** warmer than in other areas during the summer.



How to implement a Territorial Indicator Framework?

Dive into the data

40+ indicators for

1 200 cities and

2 850 regions across the OECD

Policy checklist

Climate-proof regional development

Enable and scale-up local climate action and resilience

Integrate a place-based perspective into climate policy

Practices

36 leading practices from cities, regions and countries.

About us

The OECD Centre for Entrepreneurship, SMEs, Regions and Cities (CFE) helps local and national governments unleash the potential of entrepreneurs and small and medium-sized enterprises, promote inclusive and sustainable regions and cities, boost local job creation and implement sound tourism policies.

Questions? Contact Tadashi.Matsumoto@oecd.org



<https://oecdCogito.blog/>



@OECD_local



/oecd-local



www.oecd.org/cfe