

**Pensions at a Glance 2011**

**Retirement-income systems in OECD and G20 countries**

DOI: [http://dx.doi.org/10.1787/pension\\_glance-2011-en](http://dx.doi.org/10.1787/pension_glance-2011-en)

ISBN 978-92-64-09523-6 (print)

ISBN 978-92-64-09628-8 (PDF)

© OECD 2011

**Corrigenda**

**Page 119: GROSS PENSION REPLACEMENT RATES**

Figures for Sweden have been revised.  
Country order in the graphs has also changed.

	Median earner	0.5	1	1.5
Sweden	58.4	72.9	58.4	72.1

**Page 121: GROSS PENSION REPLACEMENT RATES: PUBLIC AND PRIVATE SCHEMES**

Figures for Sweden have been revised.

	Public			Mandatory private			Voluntary DC			Total mandatory			Total with voluntary		
	0.5	1	1.5	0.5	1	1.5	0.5	1	1.5	0.5	1	1.5	0.5	1	1.5
Sweden	50.2	35.8	26.2	22.7	22.7	45.9				72.9	58.4	72.1			

**Page 125: NET PENSION REPLACEMENT RATES**

Figures for Sweden have been revised.  
Country order in the graphs has also changed.

	Median earner	0.5	1	1.5
Sweden	57.4	71.1	57.7	75.2

**Page 127: NET PENSION REPLACEMENT RATES : PUBLIC AND PRIVATE SCHEMES**

Figures for Sweden have been revised.

	Public			Mandatory private			Voluntary DC			Total mandatory			Total with voluntary		
	0.5	1	1.5	0.5	1	1.5	0.5	1	1.5	0.5	1	1.5	0.5	1	1.5
Sweden	49.0	35.4	27.3	22.1	22.4	47.8				71.1	57.7	75.2			

**Page 131: INVESTMENT RISK AND PRIVATE PENSIONS**

Figures for Sweden have been revised.

Mandatory or quasi-mandatory defined contribution plans						
Percentile of rate of return	Gross replacement rate (%)			Net replacement rate(%)		
	10	50	90	10	50	90
Annual real return (%)	2.5	4.3	6.0	2.5	4.3	6.0
DC	18.1	27.4	42.2	18.0	26.9	40.7
Sweden Other	35.8	35.8	35.8	35.6	35.1	34.5
Total	53.9	63.2	78.0	53.7	62.0	75.3

**Page 133: GROSS PENSION WEALTH**

Figures for Sweden have been revised.

Country order in the graphs has also changed.

	Individual earnings, multiple of mean					
	Men			Women		
	0.5	1.0	1.5	0.5	1.0	1.5
Sweden	12.3	9.9	12.1	13.8	11.2	13.6

**Page 135: NET PENSION WEALTH**

Figures for Sweden have been revised.

	Individual earnings, multiple of mean					
	Men			Women		
	0.5	1.0	1.5	0.5	1.0	1.5
Sweden	9.4	7.2	8.2	10.5	8.1	9.2

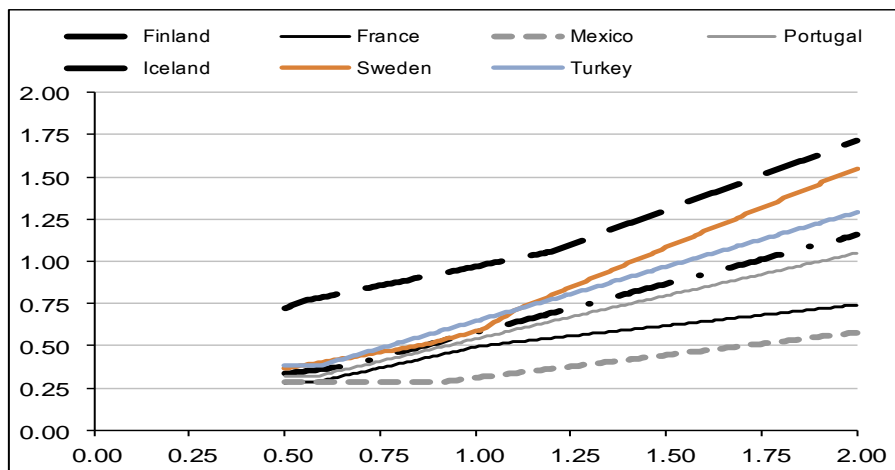
**Page 137: PROGRESSIVITY OF PENSION BENEFIT FORMULAE**

Figures for Sweden have been revised.

	OECD average distribution		National earnings distribution		
	Pension Gini	Progressivity index	Pension Gini	Progressivity index	Gini wage
Sweden	30.9	-7.2	27.5	-13.1	24.3

**Page 139: PENSION-EARNINGS LINK**

Figures for Sweden have been revised.  
The graph should now be



**Page 141: WEIGHTED AVERAGES: PENSION LEVELS AND PENSION WEALTH**

Figures for Sweden have been revised.  
The positioning of Sweden on the graph has also changed.

	Weighted average pension level		Weighted average pension wealth		Average pension wealth (USD)	
	Men	Women	Men	Women	Men	Women
Sweden	68.3	68.3	11.1	12.5	593,000	668,000

**Page 143: RETIREMENT-INCOME PACKAGE**

Figures for Sweden have been revised.

	First tier			Second tier				Total
	Resource-tested	Basic	Minimum	Public ER	Public DC	Private DB	Private DC	
Sweden			5.2	51.4			43.4	100

**Page 177: THE PENSION GAP**

Figures for Sweden have been revised and Sweden should no longer be included in the graphs.

**Page 309: SWEDEN**

Figures for Sweden have been revised.  
All four charts and the table have been slightly revised.